

# Coronavirus in Hampshire – *Update*

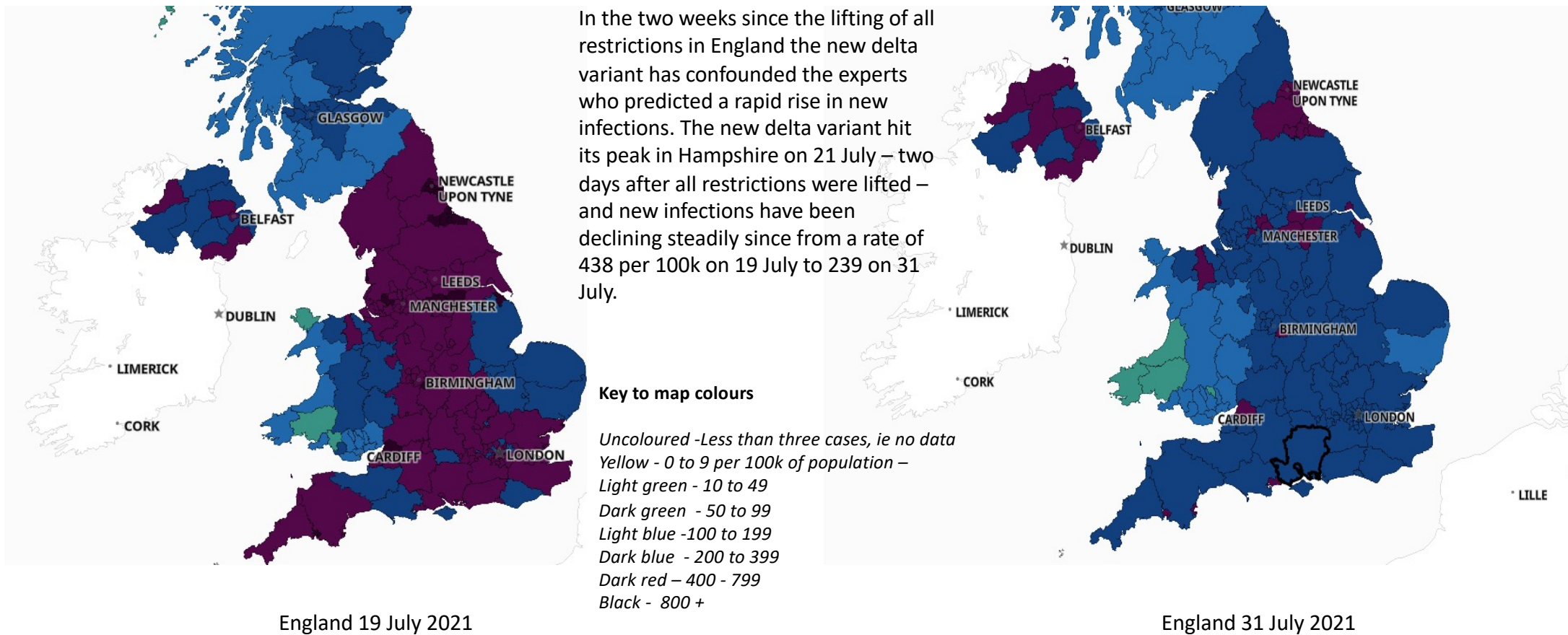
---

Update  
August 1, 2021

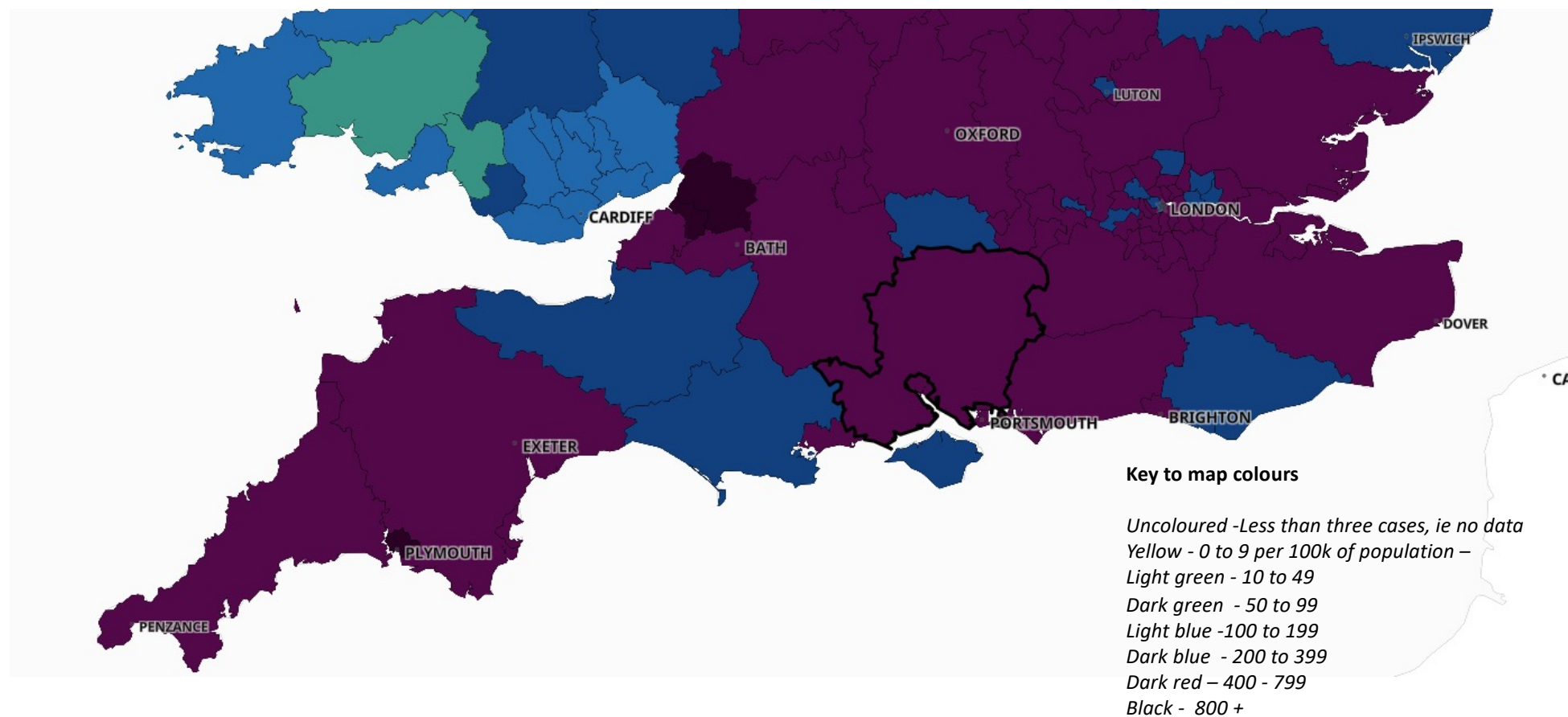
Data on district council areas  
in Hampshire



## Coronavirus – July 2021



## *Southern England on 19 July 2021*



## *Surprising fall in new covid infections*

After nearly two weeks since the lifting of all restrictions in England the new delta variant has confounded the experts who predicted a rapid rise in new infections, a heavy load on hospitals and a large increase in covid-related deaths. The reality was different.

But the month started badly and in the first 18 days – on the eve of all restrictions being lifted – 10,036 new cases were recorded across the county, an average of more than 550 a day.

In Basingstoke and Deane 1,672 new cases were recorded, in East Hampshire there were 738 and in Winchester the number was 851.

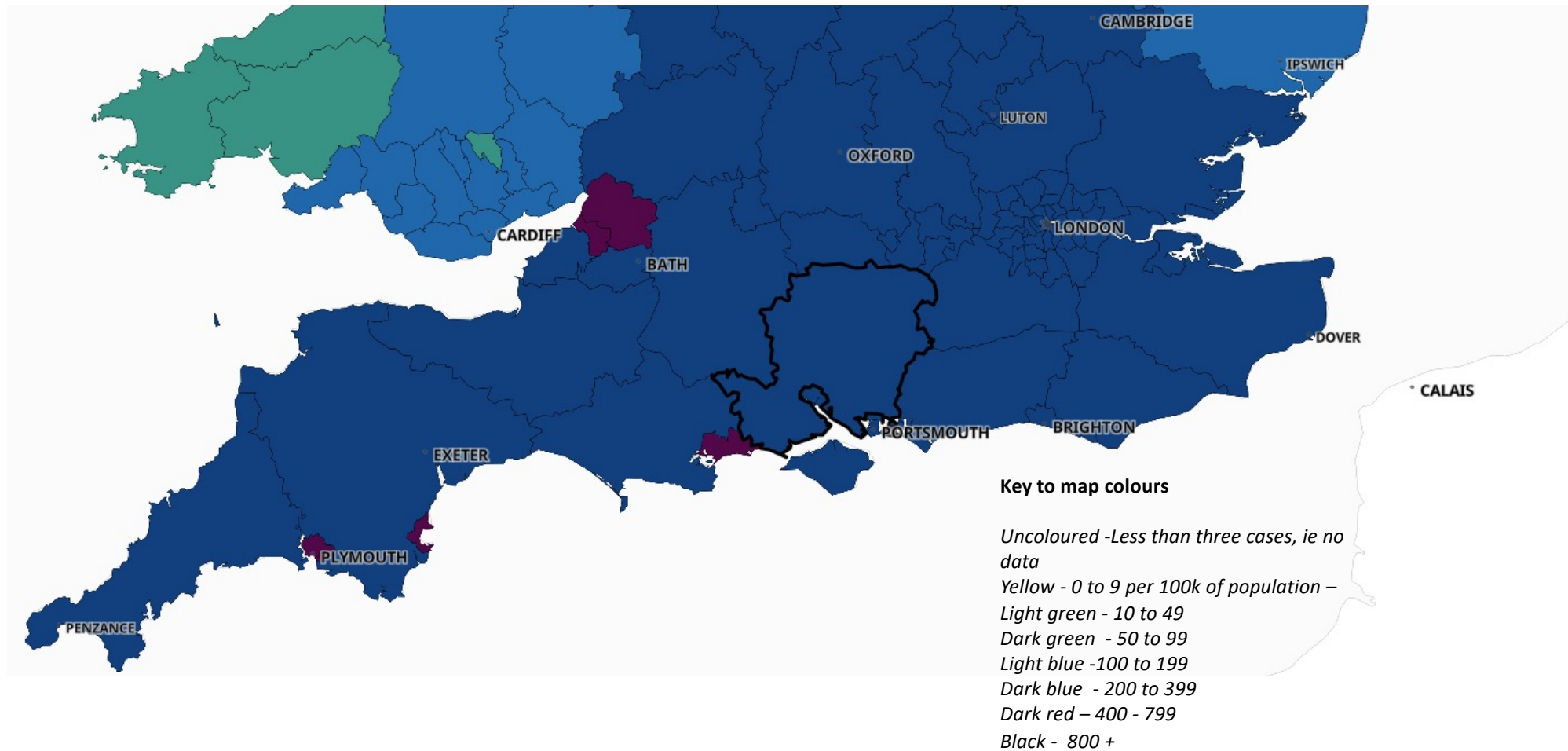
However, the infection rate hit its peak in Hampshire just three days later on 21 July when the seven-day number was 6053 and a rate of 437.8 per 100,000 of population. The number has steadily declined since.

The same pattern was followed in the districts most relevant to the Candover Valley, namely Basingstoke and Deane, East Hampshire and Winchester and in the smaller MSOAs neighbouring the Candovers. The local area of Old Basing and the Candovers hit its peak on 14 July with 30 active cases and a rate of 388 per 100k. Alresford, Four Marks and Overton came a few days later. But all have shown a steady decline in new infections in the past week.

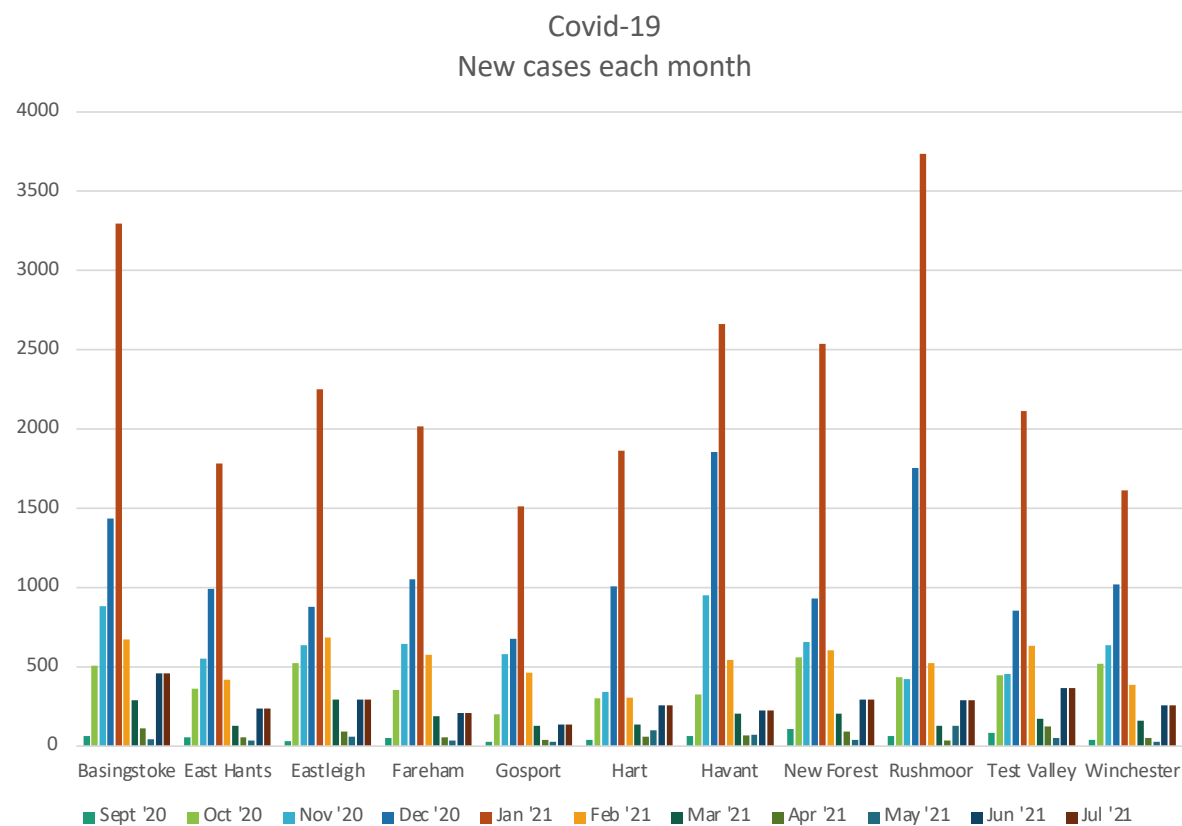
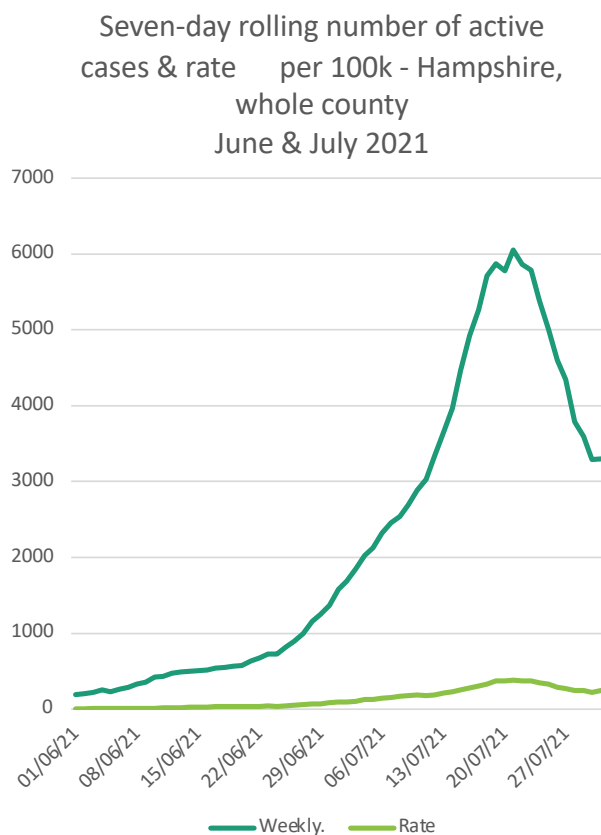
The surprising reversal in the coronavirus upward trend was also reflected in the lower hospital admissions than in the January peak and fewer deaths were recorded since the beginning of June. There have been 25 deaths linked to coronavirus recorded across the whole county in the last two months – none of them in Basingstoke and Deane, East Hampshire or Winchester.

Vaccinations have also continued apace throughout the county and extrapolating from the numbers for England it points to nearly 70% of the county population having had a first dose and more than 55% having their second.

## *Southern England at 26 July 2021*



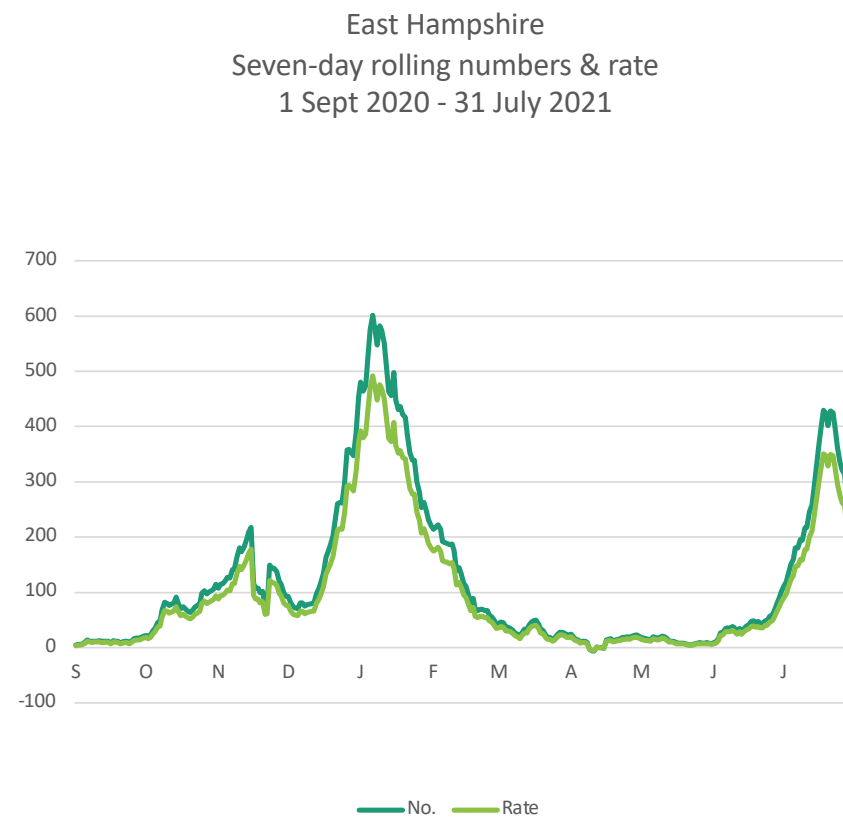
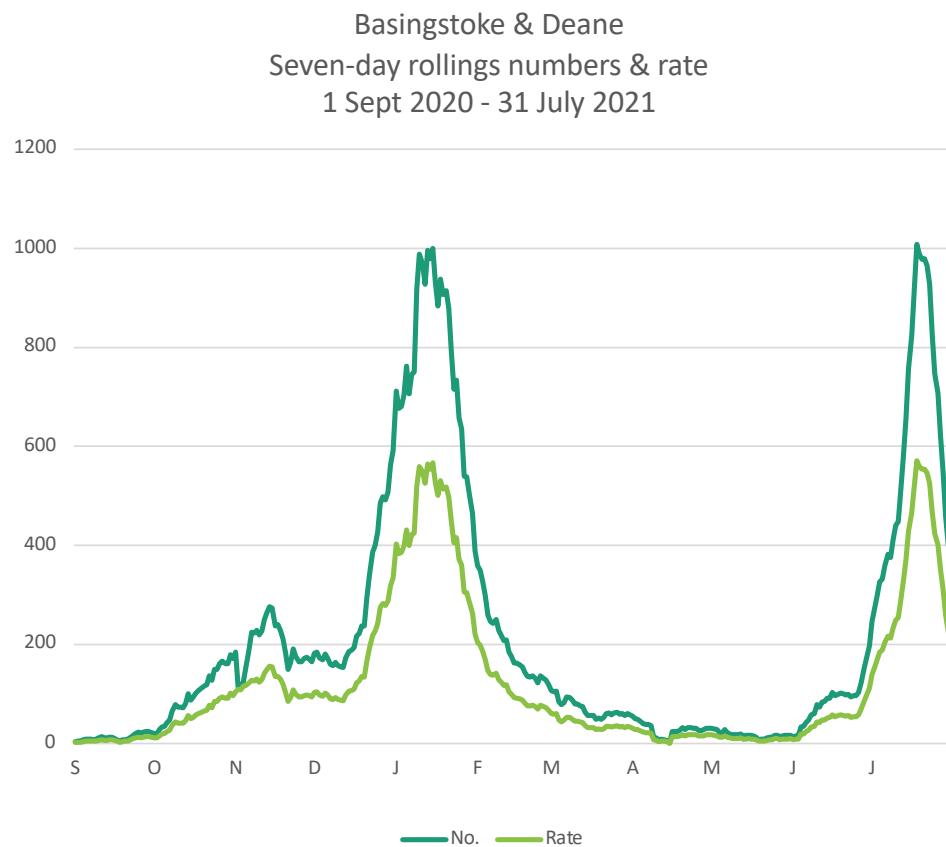
# *New covid cases across Hampshire*



### New cases monthly - Sept 2020 - July 2021

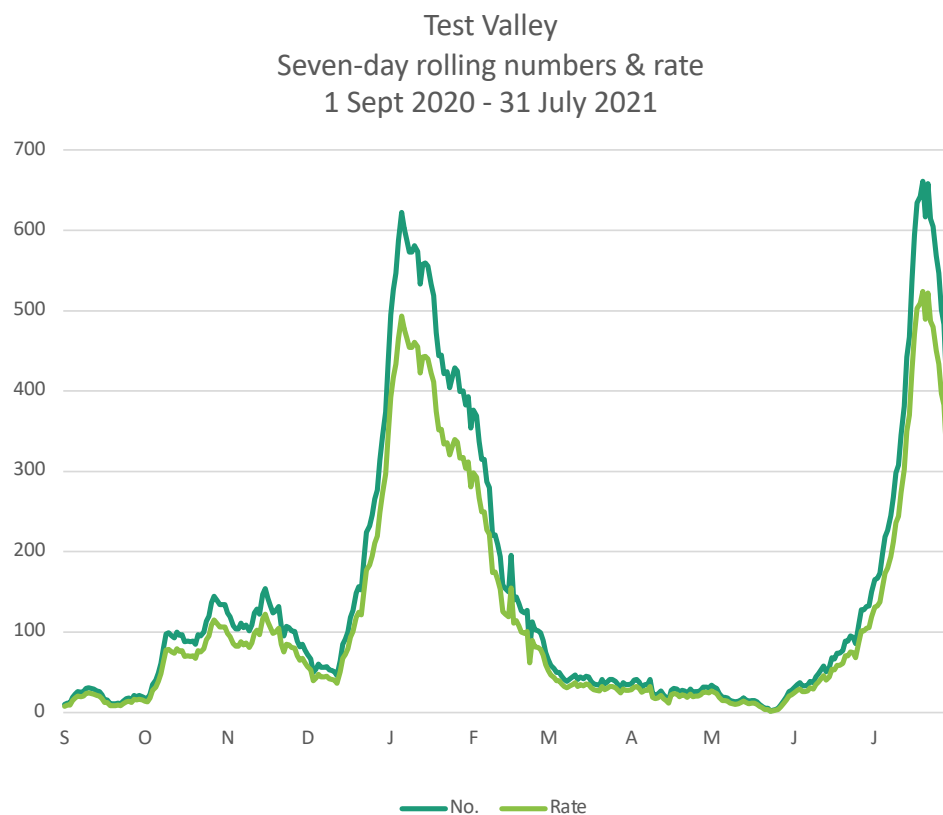
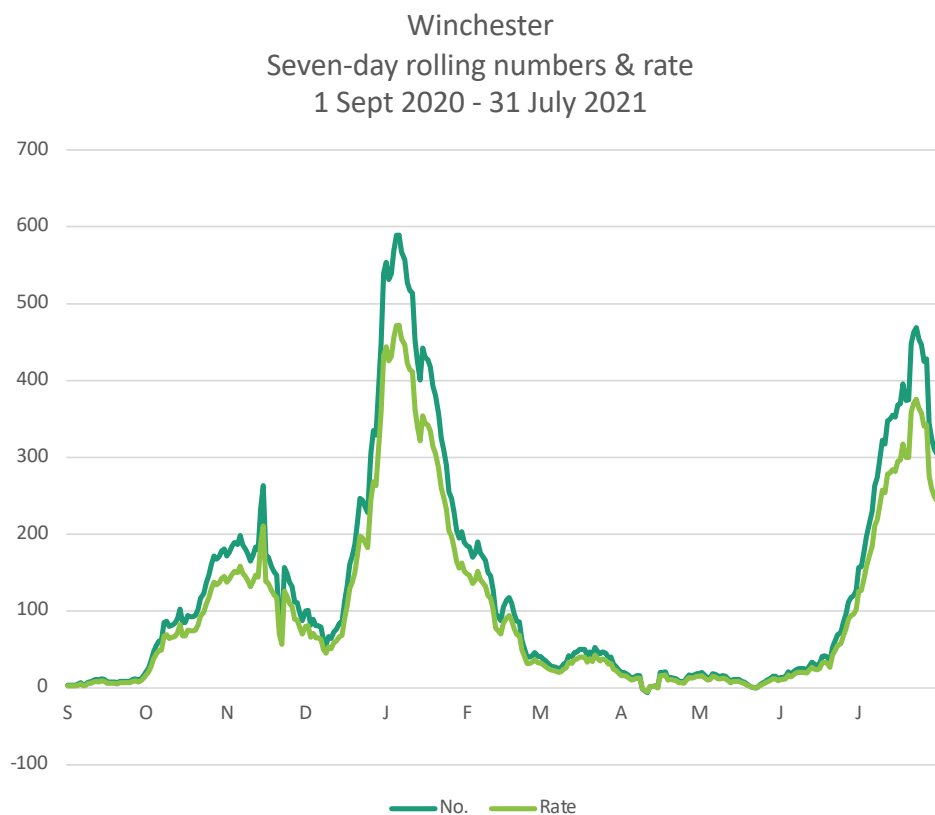
	<i>Sept '20</i>	<i>Oct '20</i>	<i>Nov '20</i>	<i>Dec '20</i>	<i>Jan '21</i>	<i>Feb '21</i>	<i>Mar '21</i>	<i>Apr '21</i>	<i>May '21</i>	<i>Jun '21</i>	<i>Jul '21</i>
Basingstoke	62	508	882	1436	3297	672	291	113	44	458	2700
East Hants	55	361	553	990	1781	418	129	55	34	236	1260
Eastleigh	32	522	635	880	2251	684	294	90	59	294	2171
Fareham	53	354	646	1052	2016	575	189	54	34	209	1331
Gosport	29	200	579	675	1511	462	129	40	26	138	1040
Hart	40	300	342	1006	1863	305	135	59	98	257	1218
Havant	65	324	953	1855	2664	543	204	68	73	225	1463
New Forest	108	558	656	930	2538	606	204	90	39	295	2038
Rushmoor	64	435	423	1755	3735	525	130	35	129	291	1098
Test Valley	82	446	456	855	2113	632	174	124	51	365	1912
Winchester	41	518	637	1019	1613	386	161	53	28	259	1549
County total	631	4526	6762	12453	25382	5808	2040	781	615	3027	17780

## *Seven-day rolling numbers of new cases & rate per 100k Sept – July*



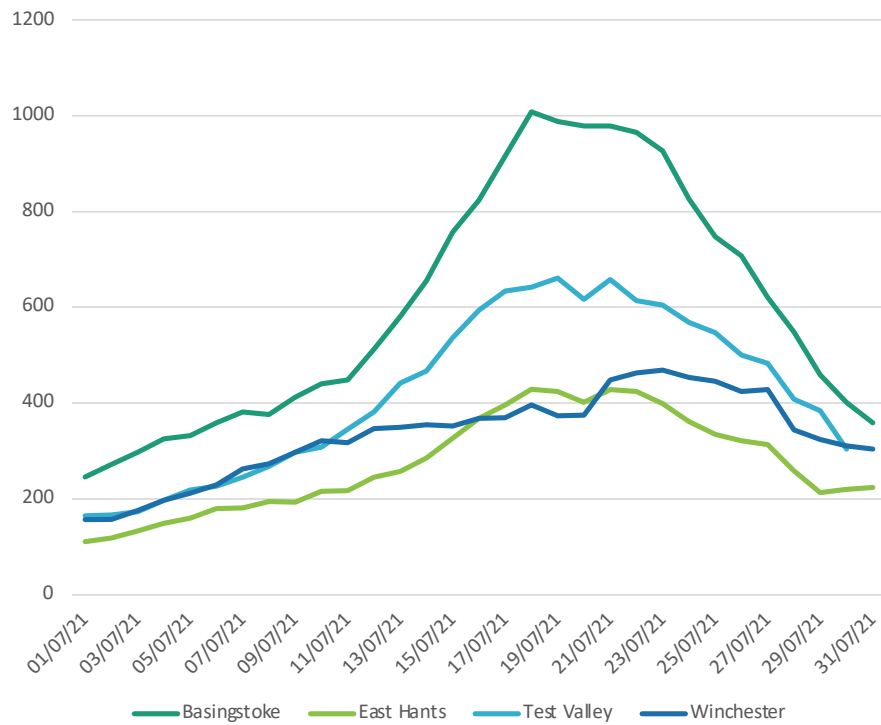


# *Seven-day rolling numbers of new cases & rate per 100k Sept – July*

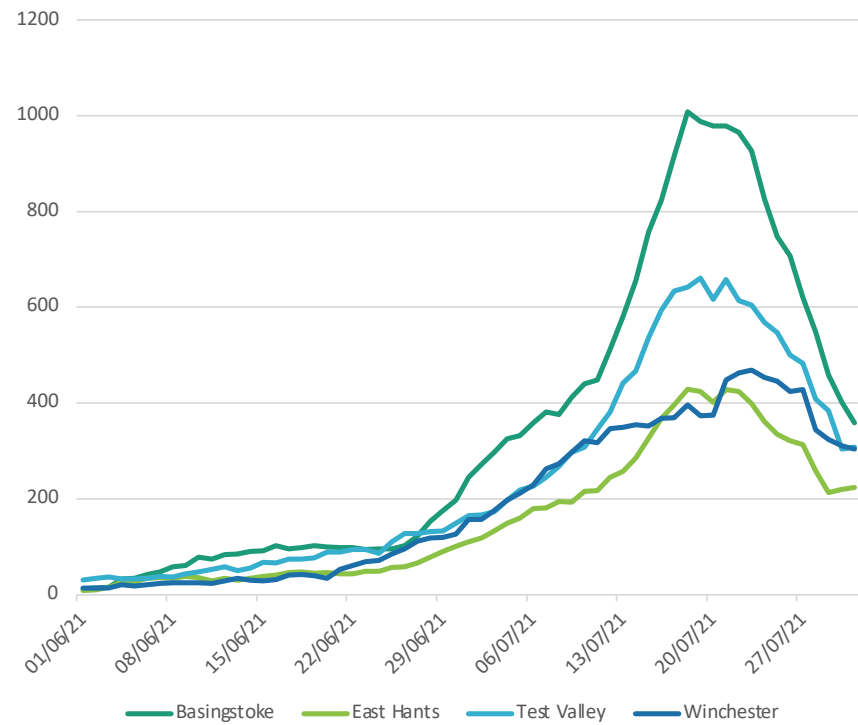


# *New covid cases in June & July 2021*

Seven-day rolling number of active cases -  
mid-Hampshire  
July 2021

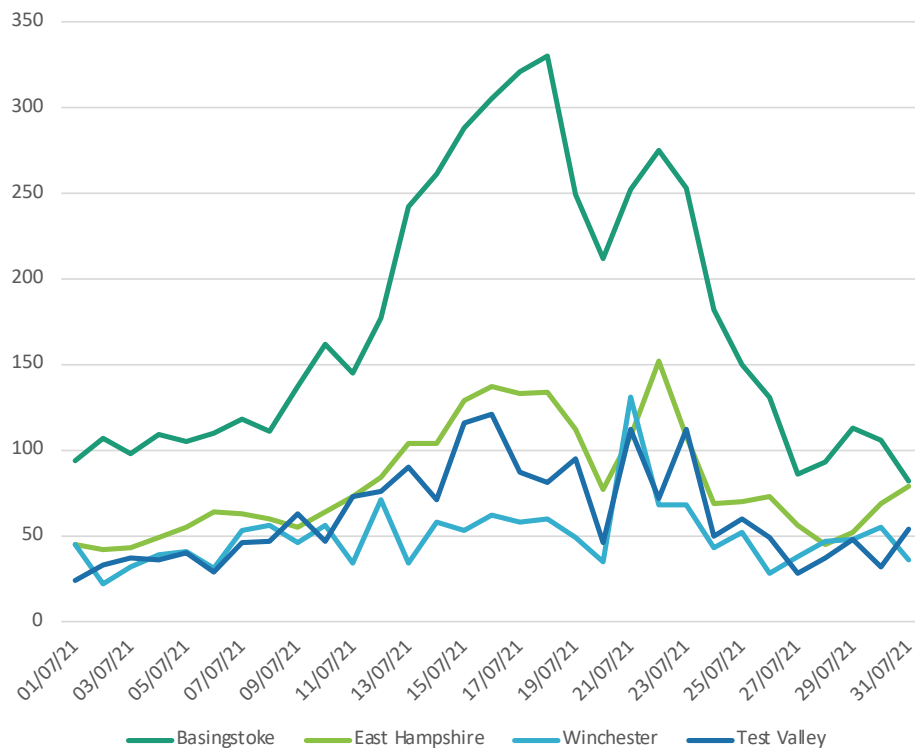


Seven-day rolling number of active cases  
mid-Hampshire  
June & July 2021

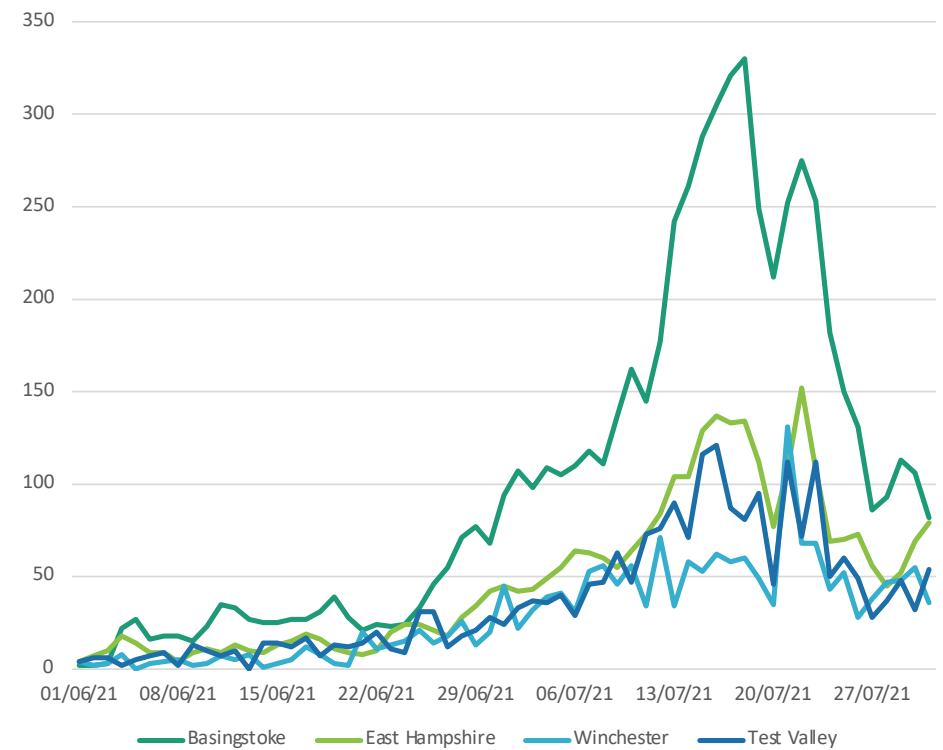


# *Number of new cases of covid each day*

Daily numbers of new cases  
July 2021

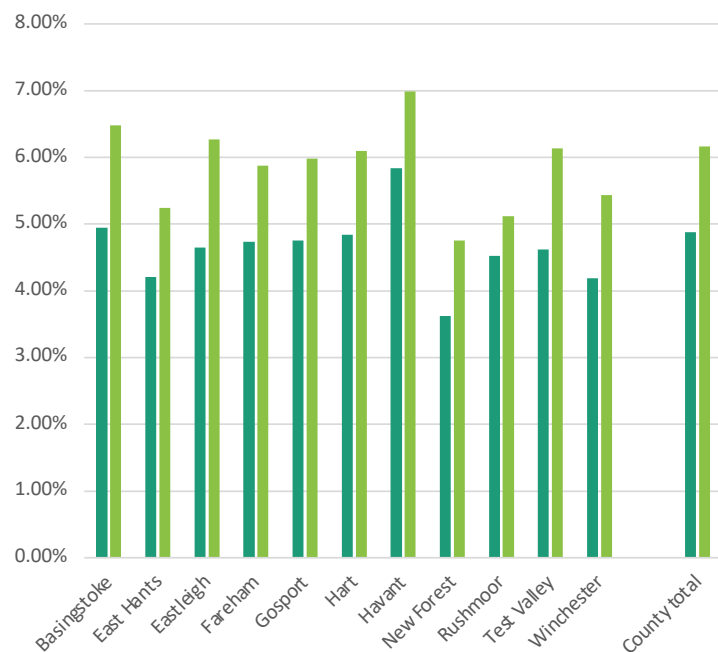


Daily numbers of new cases  
June & July 2021

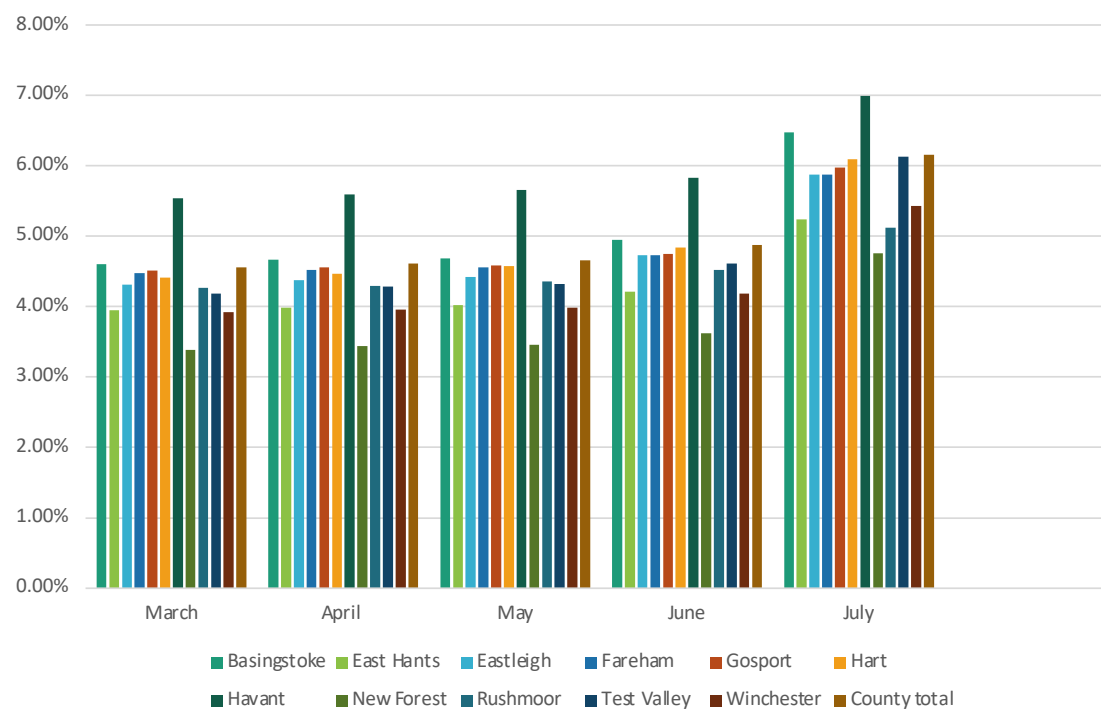


# Percentage of local populations diagnosed with covid

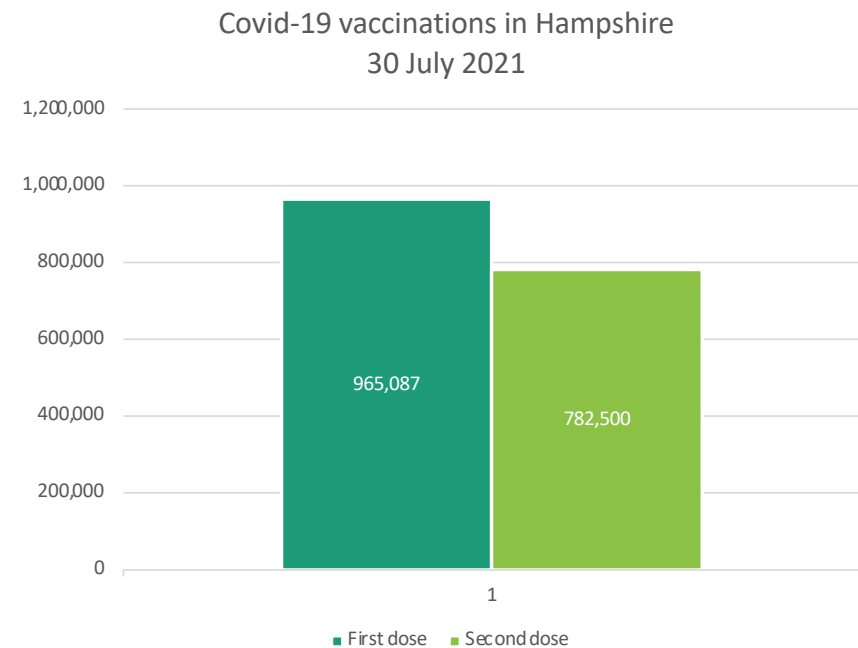
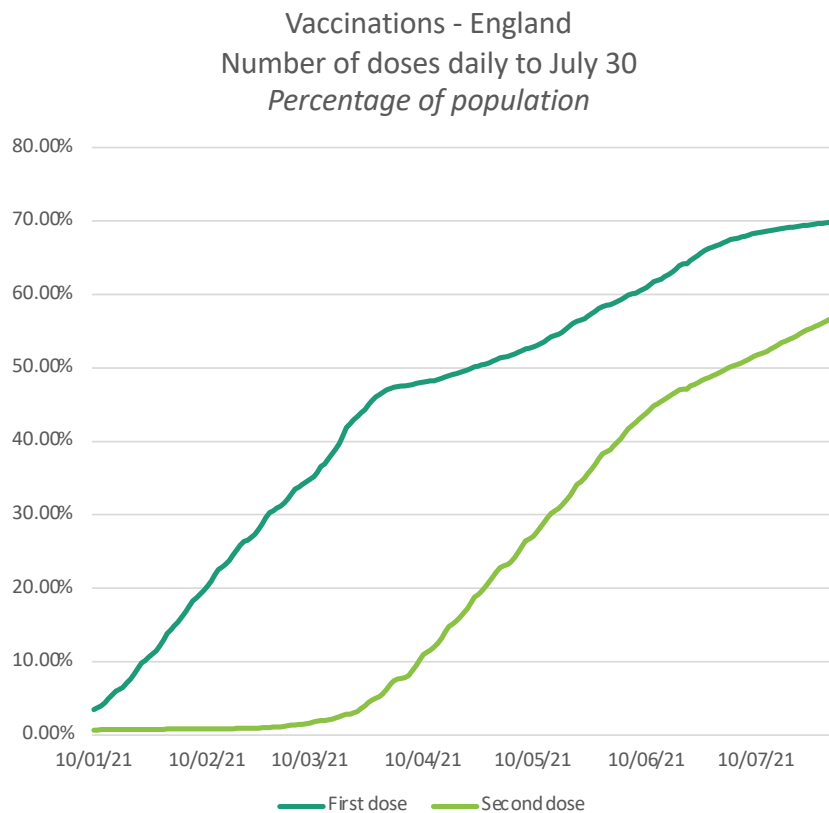
Percentage of local population diagnosed with covid in whole pandemic - June & July 2021



Percentage of population diagnosed with covid-19 monthly March - July



# Vaccinations in England & Hampshire



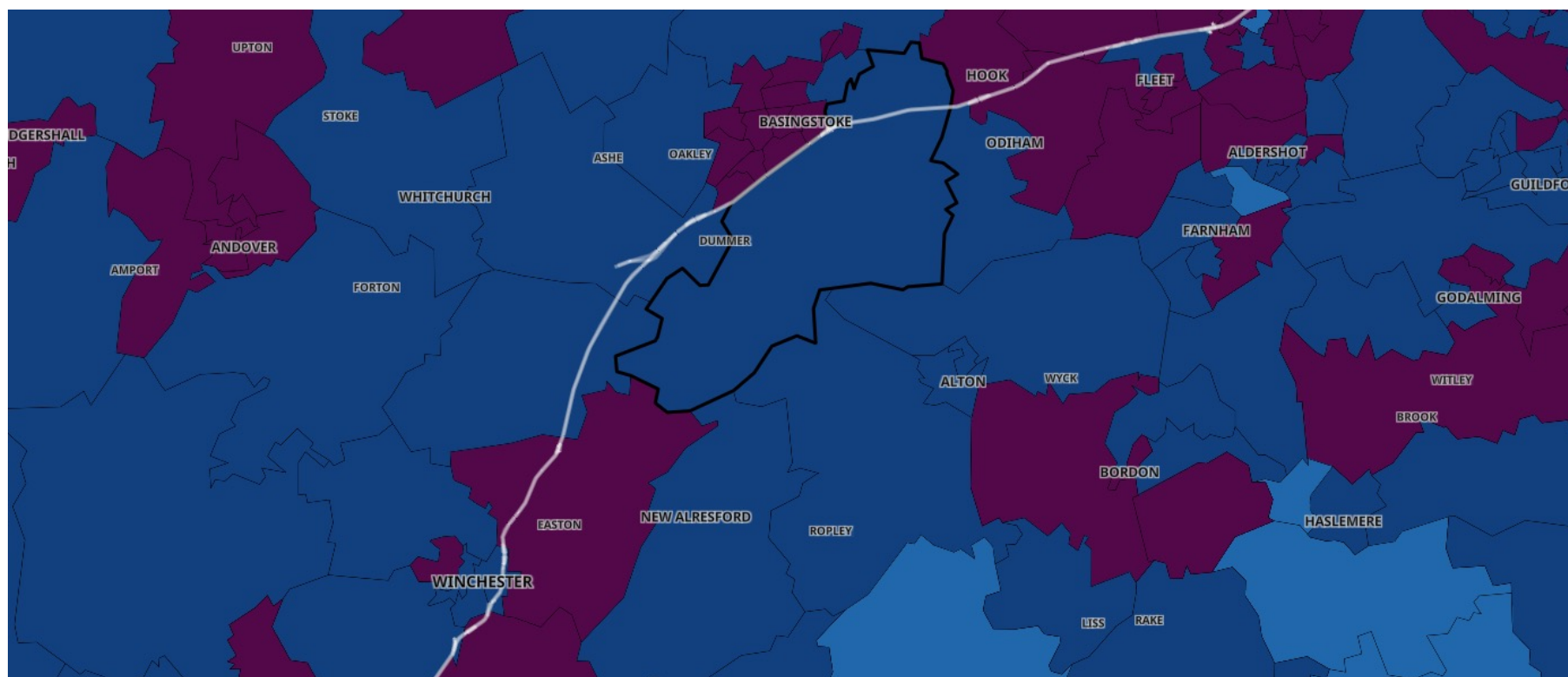
Extrapolating from the number of people vaccinated in England it is calculated that nearly 1 million people in Hampshire have had the first dose, and nearly ¾ million people have had both doses.



## *Situation at Hampshire hospitals*



## *Candover Valley and neighbouring MSOAs – 19 July 2021*



### **Key to map colours**

Uncoloured - Less than three cases, ie no data

Yellow - 0 to 9 per 100k of population –

Light green - 10 to 49

Dark green - 50 to 99

Light blue - 100 to 199

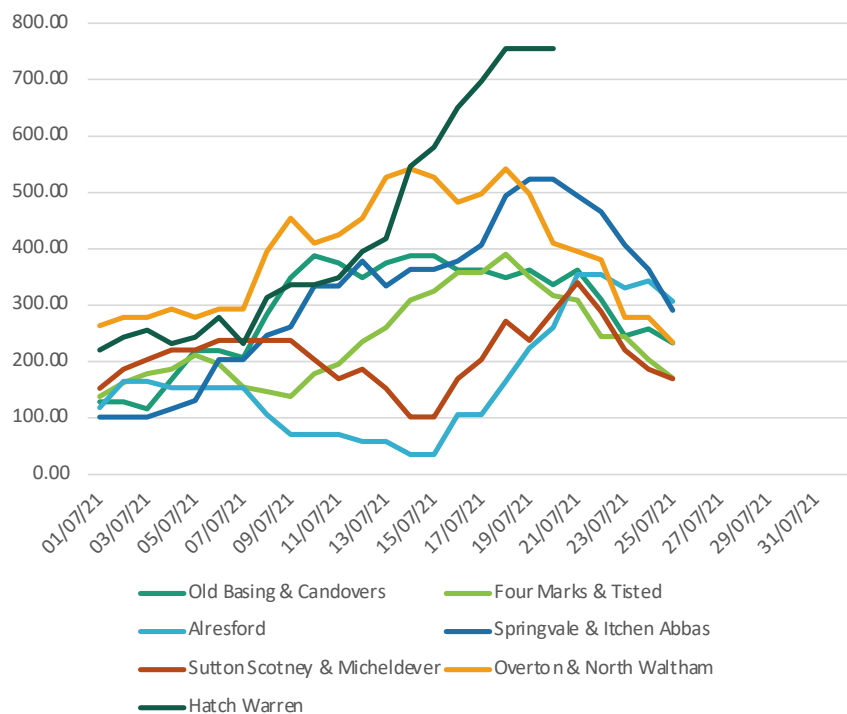
Dark blue - 200 to 399

Dark red – 400 - 799

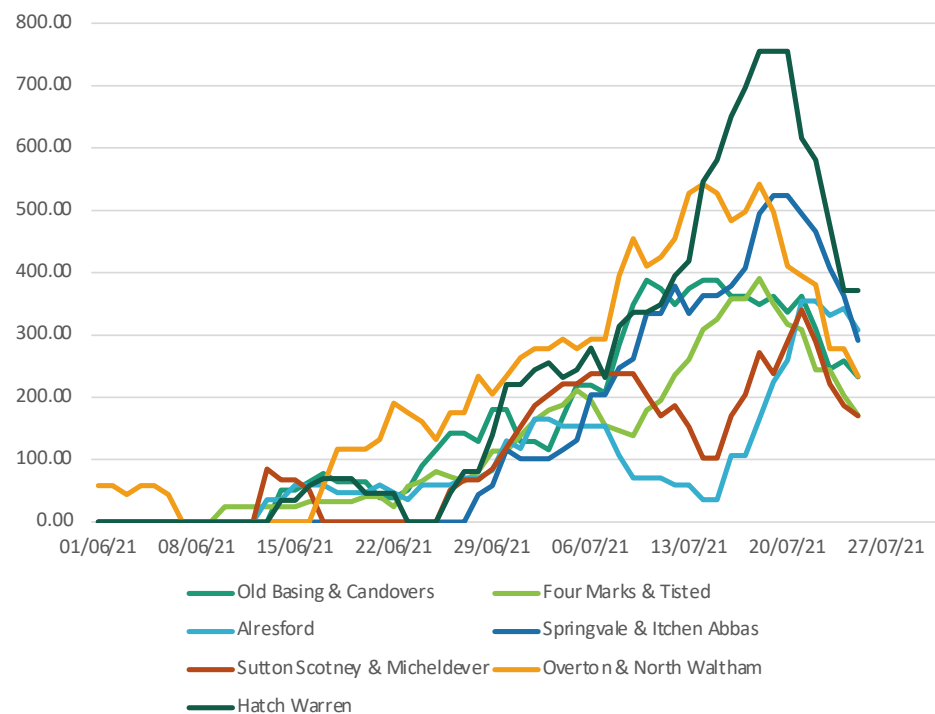
Black - 800 +

# Local MSOAs to Candover Valley

Local MSOAs rolling seven-day rate per 100K  
July 2021

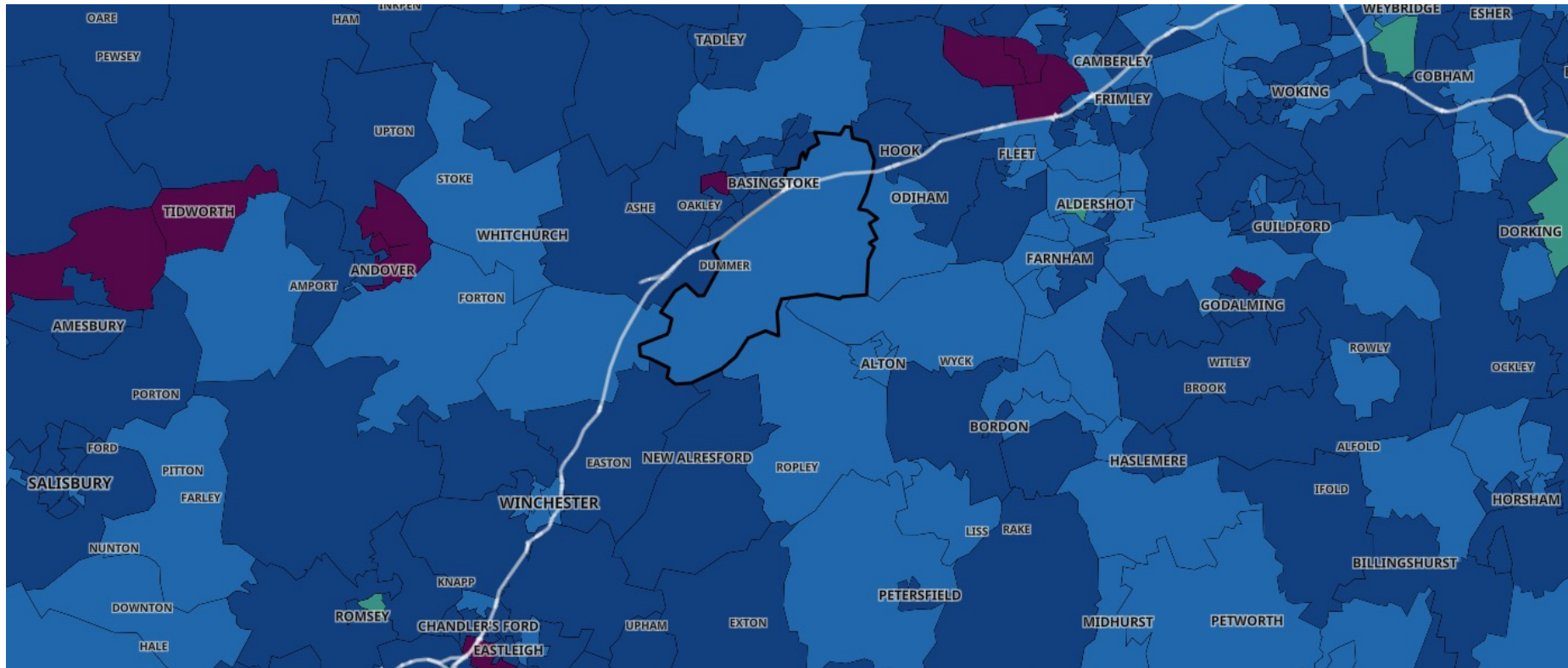


Local MSOAs rolling seven-day rate per 100K  
June & July 2021



The MSOAs are local areas of circa 7,500 population. The published details of new cases in these areas lag five days behind those published for districts and the county area.

## Candover Valley & neighbouring MSOAs - 26 July 2021



### Key to map colours

Uncoloured - Less than three cases, ie no data

Yellow - 0 to 9 per 100k of population –

Light green - 10 to 49

Dark green - 50 to 99

Light blue - 100 to 199

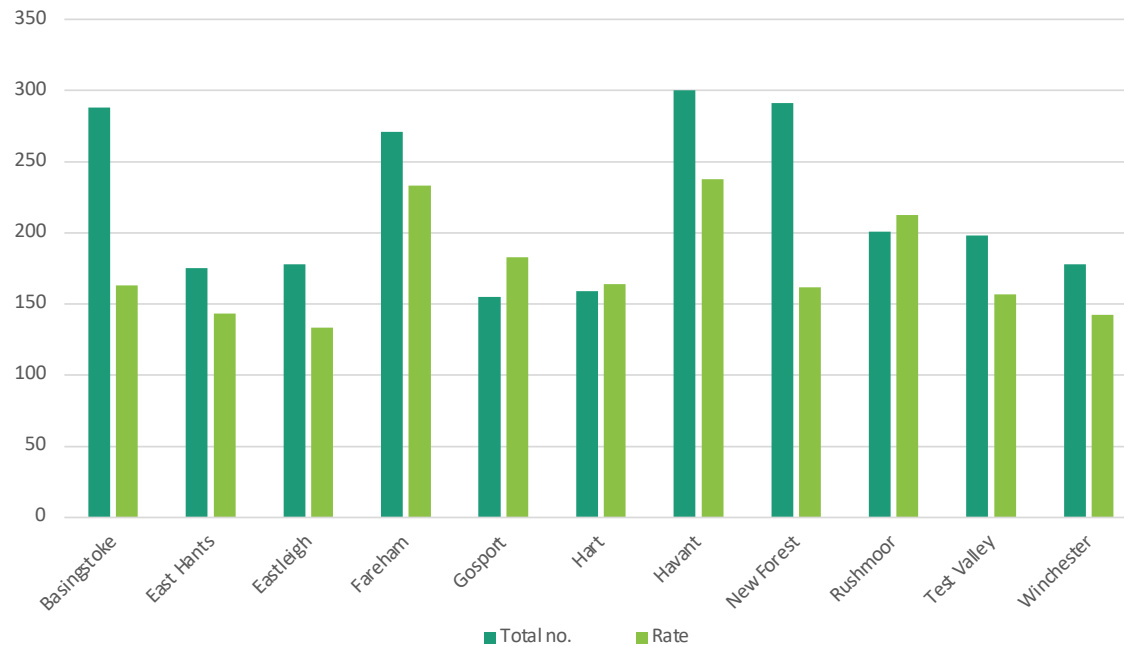
Dark blue - 200 to 399

Dark red – 400 - 799

Black - 800 +

# Covid-related deaths in Hampshire

Tota covid-19 deaths in Hampshire districts  
to 30 June 2021



## Deaths

July 31, 2021

	Total no.	% Pop.	Rate
Basingstoke	288	1.63%	163.12
East Hants	175	1.43%	143.09
Eastleigh	178	1.46%	133.27
Fareham	271	2.03%	233.14
Gosport	155	1.83%	182.68
Hart	159	1.64%	163.80
Havant	300	2.38%	237.68
New Forest	291	1.62%	161.58
Rushmoor	201	2.12%	212.47
Test Valley	198	1.57%	156.94
Winchester	178	1.43%	142.58
County total	2395	1.73%	173.24

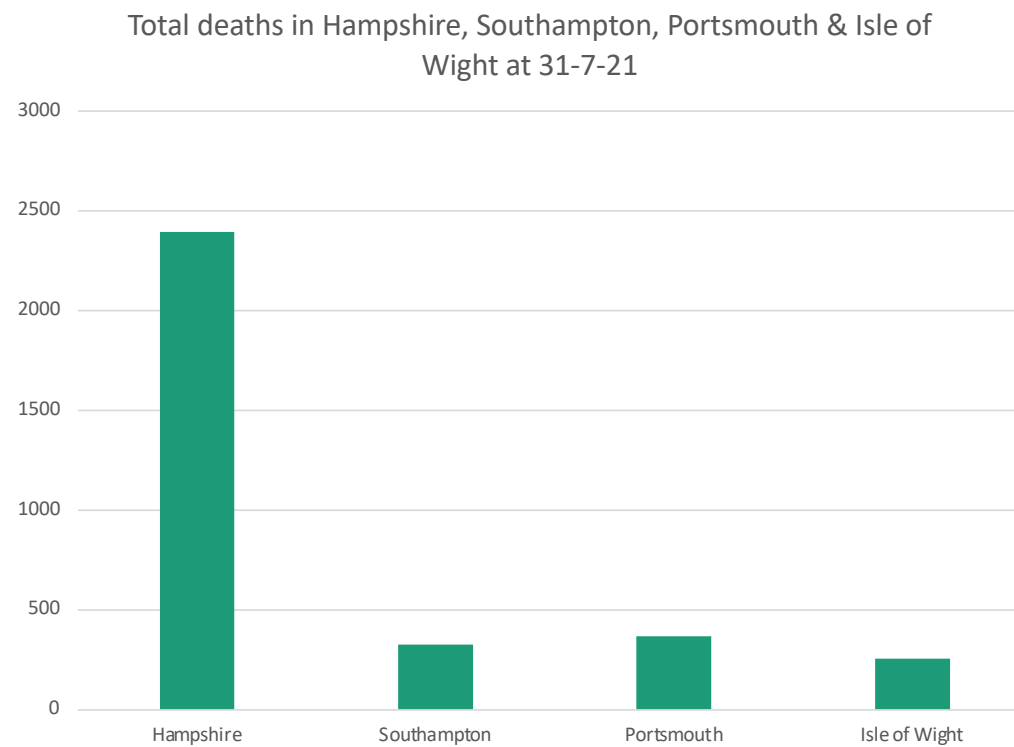


# Deaths in Hampshire districts to covid-19

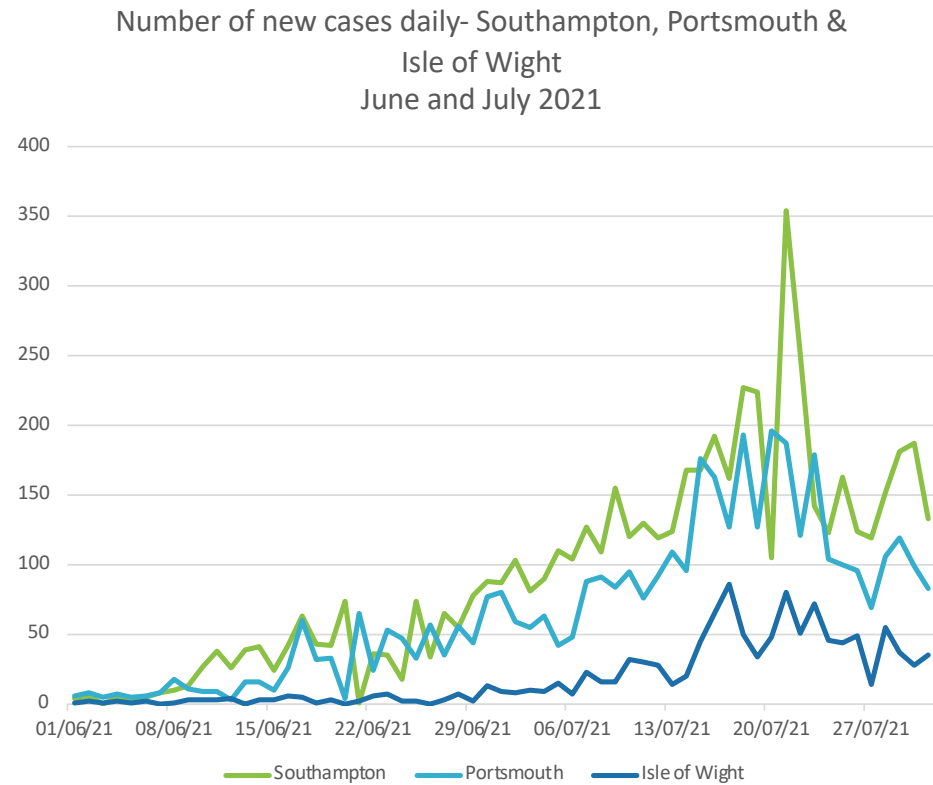
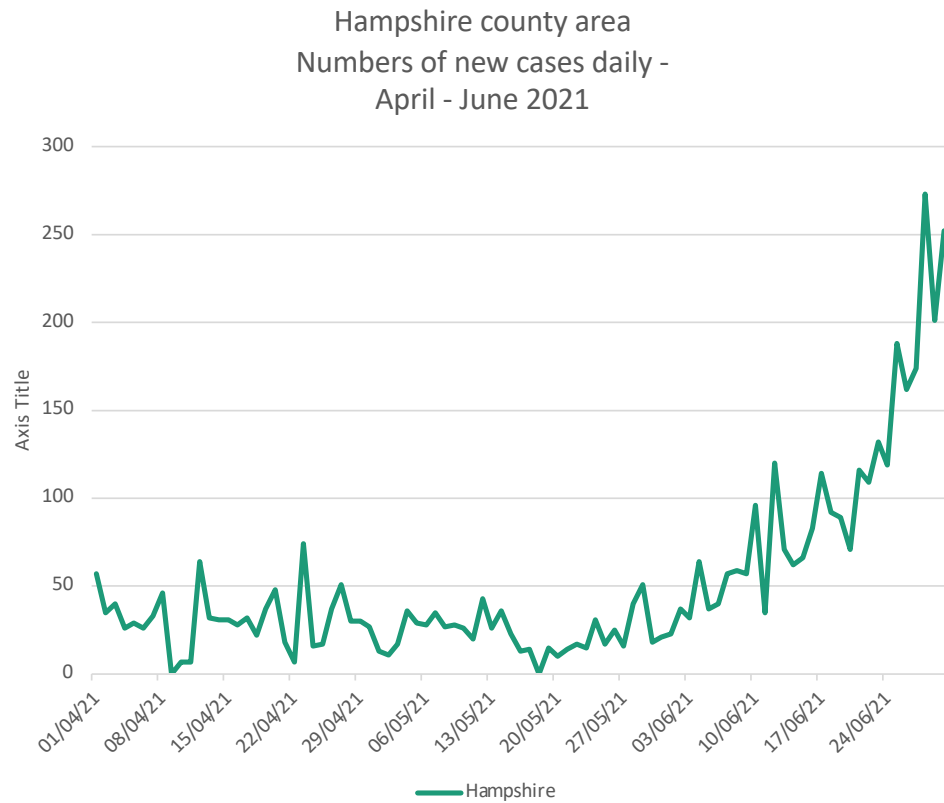
Total number of deaths at month end & rate per 100,000 of local population

	Population	Oct '20		Nov '20		Dec '20		Jan '21		Feb '21		March '21		April '21		May '21		June '21		July '21	
	000s	No.	Rate	No.	Rate	No.	Rate	No.	Rate	No.	Rate	No.	Rate	No.	Rate	No.	Rate	No.	Rate	No.	Rate
Basingstoke	176.56	101	57.20	124	70.23	149	84.39	251	142.16	280	158.59	286	161.98	289	163.68	289	163.68	287	162.55	288	163.12
East Hants	122.3	55	44.97	60	49.06	72	58.87	135	110.38	173	141.46	179	146.36	179	146.36	178	145.54	174	142.27	174	142.27
Eastleigh	133.56	66	49.42	78	58.40	81	60.65	136	101.83	168	125.79	176	131.78	176	131.78	176	131.78	174	130.28	177	132.52
Fareham	116.24	69	59.36	78	67.10	106	91.19	207	178.08	253	217.65	264	227.12	266	228.84	266	228.84	270	232.28	270	232.28
Gosport	84.85	43	50.68	51	60.11	77	90.75	125	147.32	154	181.50	157	185.03	157	185.03	157	185.03	154	181.50	156	183.85
Hart	97.07	36	37.09	39	40.18	45	46.36	134	138.04	150	154.53	150	154.53	152	156.59	152	156.59	159	163.80	159	163.80
Havant	126.22	75	59.42	92	72.89	142	112.50	240	190.14	275	217.87	278	220.25	281	222.63	282	223.42	300	237.68	300	237.68
New Forest	180.1	87	48.31	104	57.75	120	66.63	219	121.60	284	157.69	292	162.13	295	163.80	297	164.91	290	161.02	290	161.02
Rushmoor	94.6	55	58.14	58	61.31	79	83.51	159	168.08	193	204.02	195	206.13	195	206.13	195	206.13	201	212.47	201	212.47
Test Valley	126.16	78	61.83	87	68.96	100	79.26	154	122.07	186	147.43	195	154.57	195	154.57	195	154.57	195	154.57	198	156.94
Winchester	124.34	82	65.95	95	76.40	105	84.45	149	119.83	181	145.57	183	147.18	183	147.18	183	147.18	178	143.16	178	143.16
County total	1382.5	747	54.03	866	62.64	1076	77.83	1909	138.08	2297	166.15	2355	170.34	2368	171.28	2370	171.43	2382	172.30	2391	172.95
Monthly increase				682		859		1540		1852		1897		1907		1908		1922			

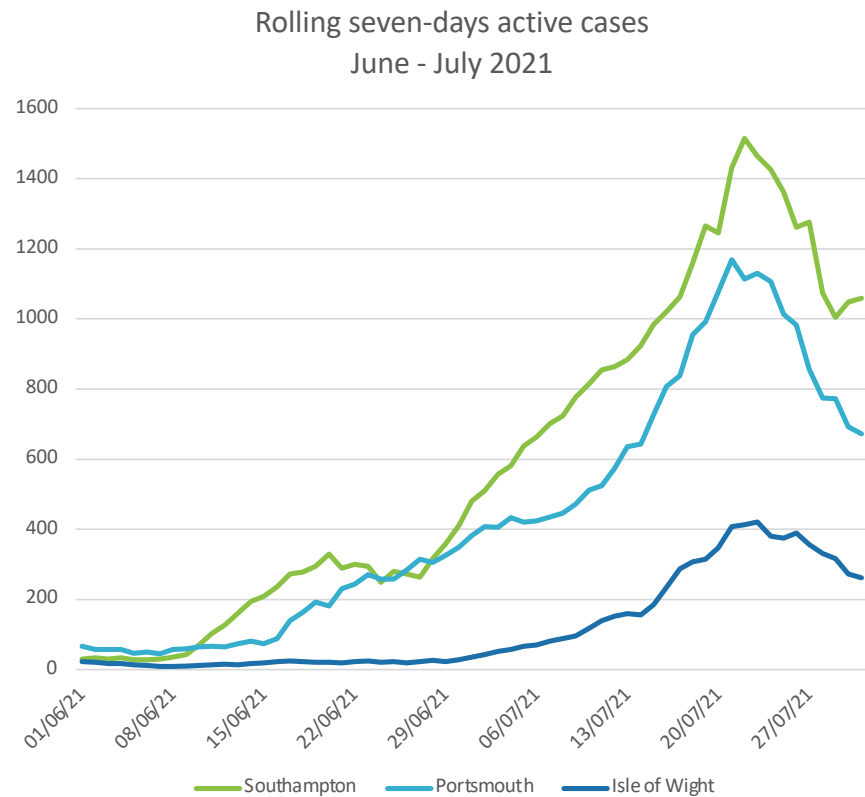
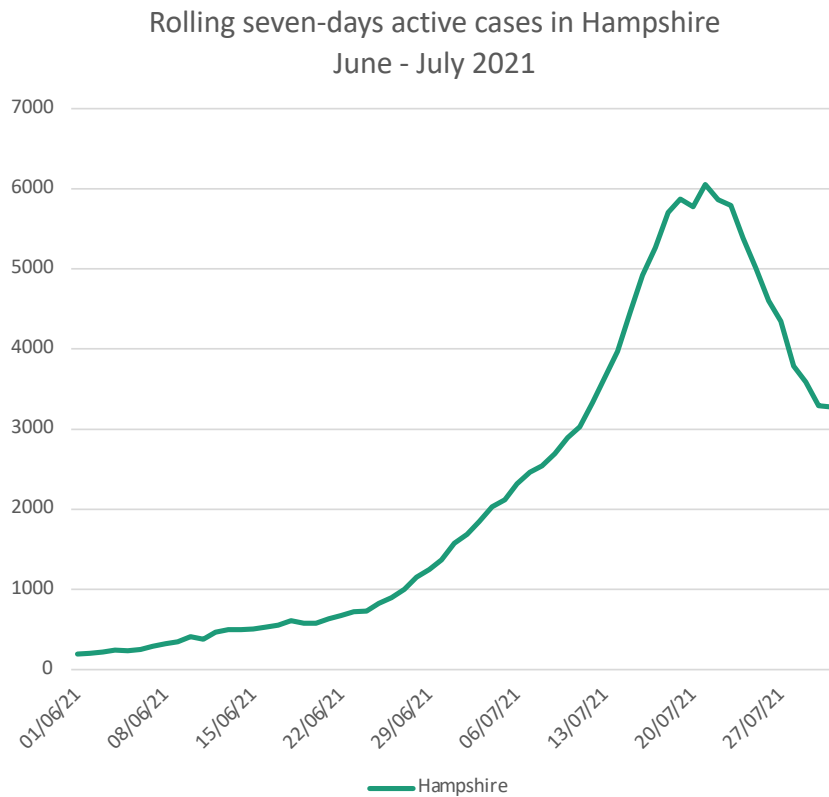
## *Covid-related deaths in geographical county*



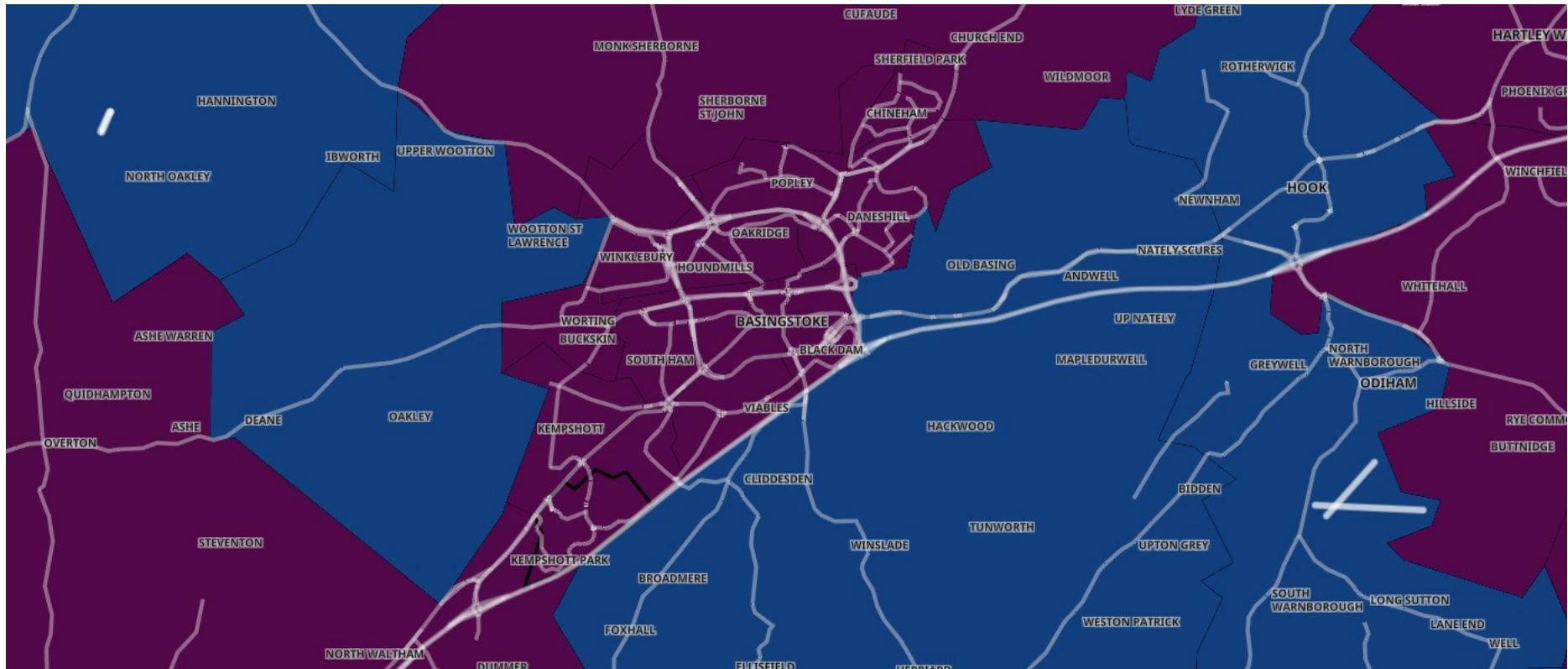
# *New cases daily in Hampshire, Southampton, Portsmouth & Isle of Wight*



## *Rolling seven-days active cases in Hampshire, Southampton, Portsmouth & Isle of Wight*



## *Basingstoke town area – 19 July 2021*



At the peak of the latest delta variant all of the Basingstoke town MSOAs recorded more than 400 new cases per 100,000 in a rolling seven-day period.



## Basingstoke town MSOAs at 26 July 2021



Only Buckskin and Worting now have more than 400 seven-day cases per 100,000 people. Houndmills and Oakridge were less than 200 (187.7).

### Key to map colours

Uncoloured - Less than three cases, ie no data  
Yellow - 0 to 9 per 100k of population –  
Light green - 10 to 49

Dark green - 50 to 99  
Light blue - 100 to 199  
Dark blue - 200 to 399  
Dark red – 400 - 799  
Black - 800 +