

# Coronavirus in Hampshire – *Update*

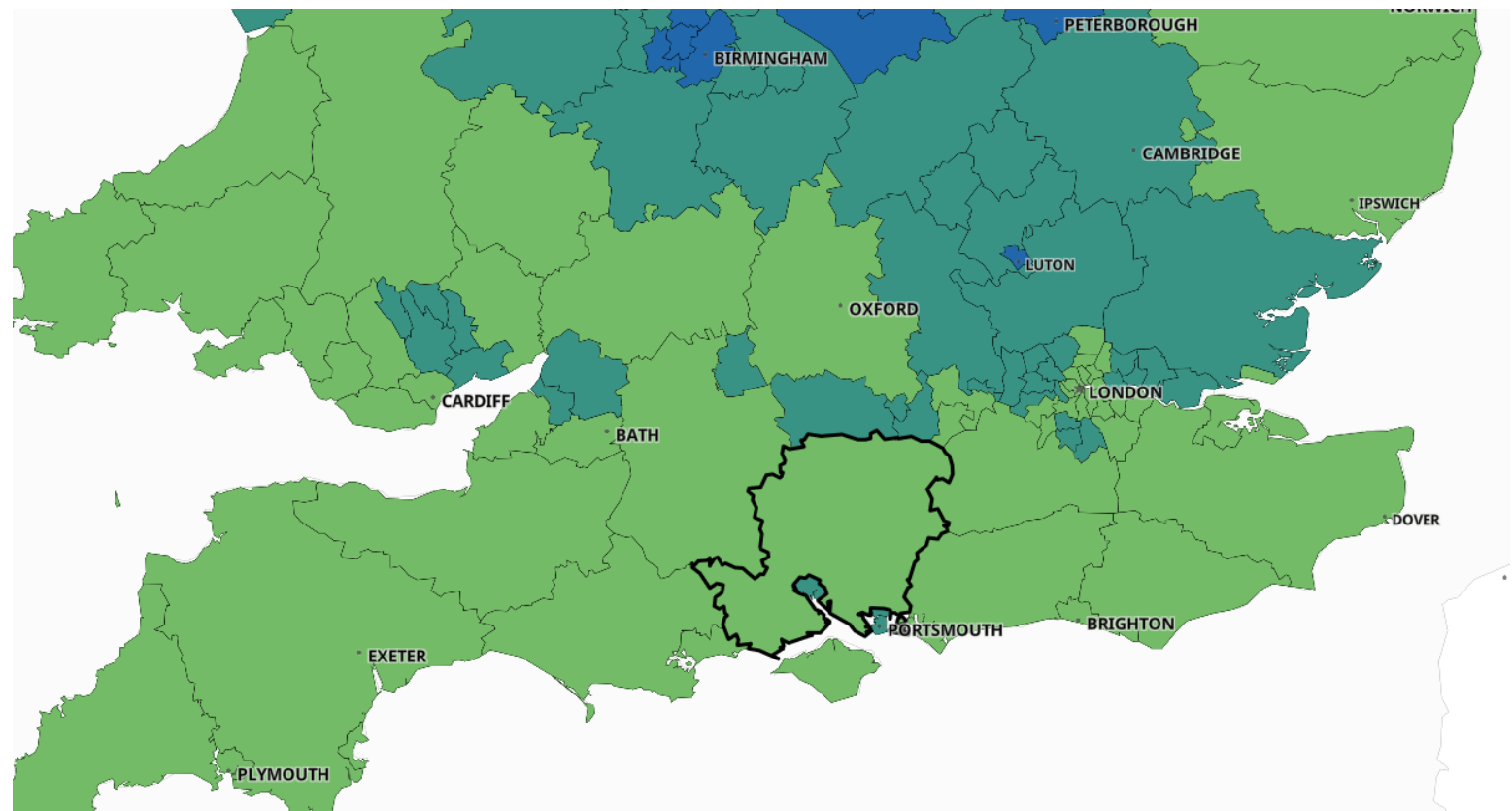
Weekly update  
March 7 2021

Data on district council areas in  
Hampshire

## Coronavirus across the south-east – 1 March 2021

### Key to map colours

Uncoloured - Less than three cases, ie no data  
Yellow - 0 to 9 per 100k of population –  
Light green - 10 to 49  
Dark green - 50 to 99  
Light blue - 100 to 199  
Dark blue - 200 to 399  
Dark red – 400 - 799  
Black - 800 +



The maps and numbers used in the MSOA tables show the situation five days before the published date of the main district and county numbers.



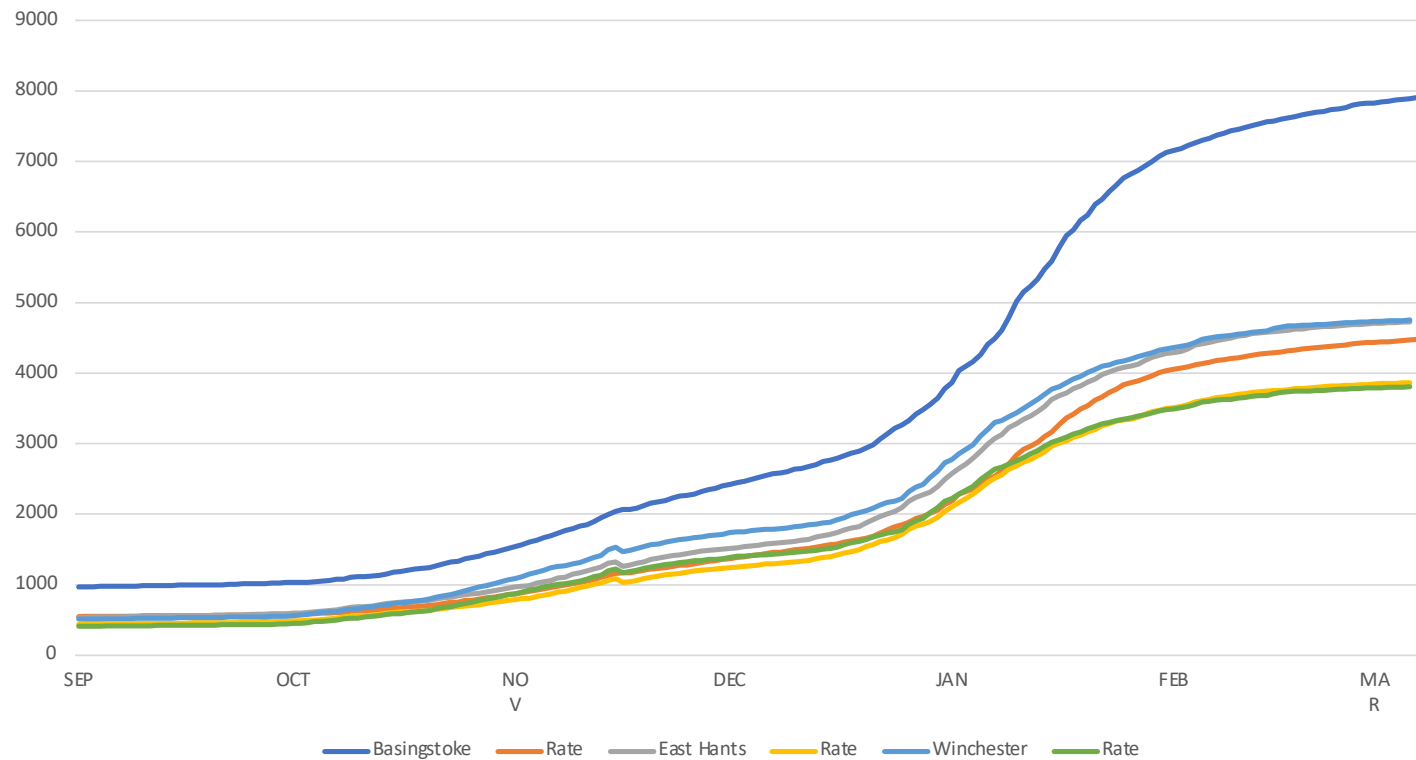
## *New cases weekly 1 November – 6 March*

New cases weekly																			
	01/11/20	07/11/20	14/11/20	21/11/20	28/11/20	05/12/20	12/12/20	20/12/20	27/12/20	31/12/20	07/01/2021	14/01/2021	21/01/2021	28/01/21	04/02/21	11/02/21	20/02/21	27/02/21	06/03/21
Basingstoke	185	225	276	149	174	180	153	237	499	591	745	979	878	539	298	208	135	127	83
East Hants	108	141	208	74	114	71	80	203	359	454	579	456	386	263	214	139	67	51	35
Eastleigh	199	203	200	116	93	71	74	118	313	486	654	667	502	292	298	201	159	108	73
Fareham	157	151	214	153	103	99	98	194	318	438	623	586	387	312	215	173	159	95	50
Gosport	114	119	184	127	120	111	104	128	189	231	407	390	310	291	227	126	116	61	37
Hart	93	117	104	36	70	61	90	197	304	507	709	526	346	206	159	77	75	53	26
Havant	134	201	296	273	157	148	202	441	619	718	880	833	525	313	244	171	109	96	67
New Forest	168	168	257	140	74	86	123	168	272	440	732	713	574	404	222	193	170	98	59
Rushmoor	123	121	134	70	84	65	119	361	621	873	1275	1066	769	471	318	156	122	62	33
Test Valley	124	106	147	107	82	60	46	157	277	437	588	559	422	393	315	194	136	90	45
Winchester	172	186	234	88	111	81	73	187	335	540	567	401	356	205	175	128	110	46	28
County total	1577	1738	2254	1333	1182	1033	1162	2391	4106	5715	7759	7176	5455	3689	2685	1766	1358	887	536

# *New coronavirus cases daily September to March*

New cases & rates  
1 September 2020 to 6 March 2021

The number of new cases daily in the three Valley districts from early September through to mid-December was on a steadily rising trend but from 11/12 December it began to rise more rapidly and was given greater impetus following the Christmas/New Year period, with an even more rapid rise in January before starting to level off in early February.



## Peak of second wave of coronavirus

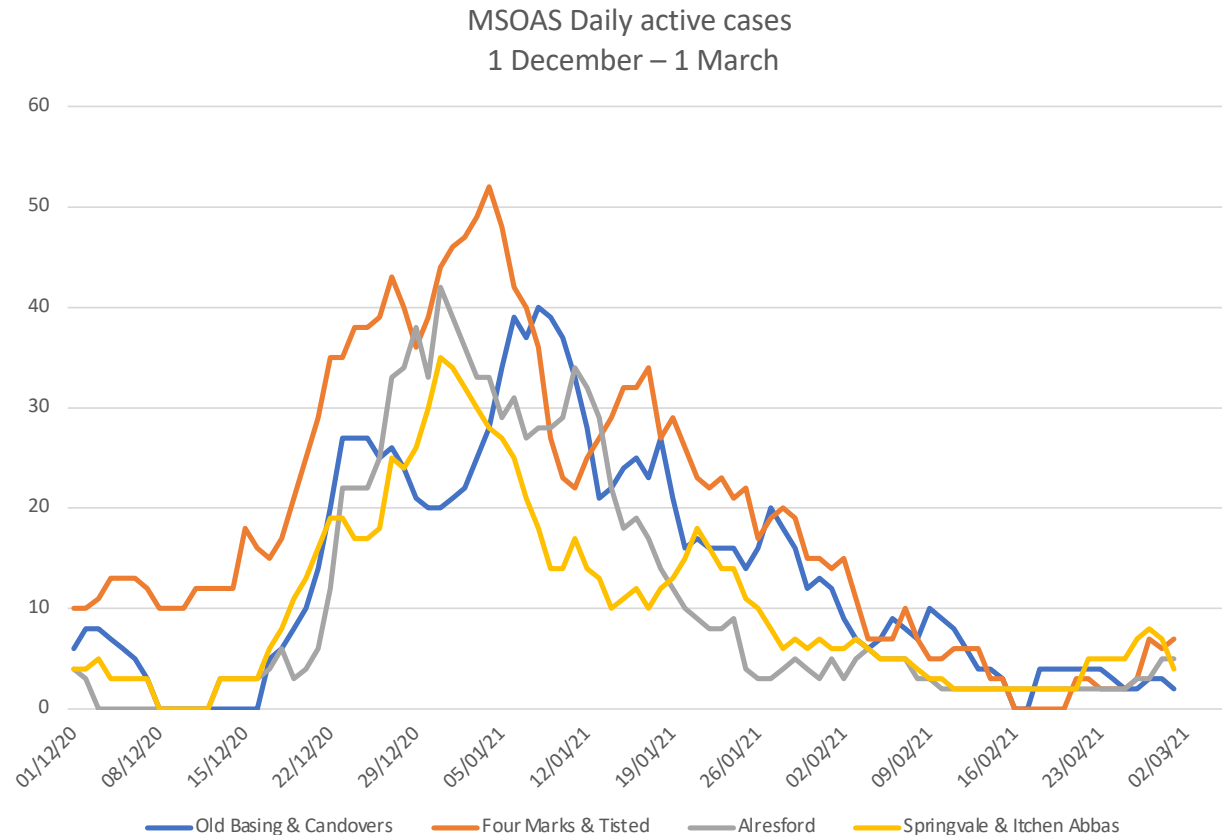
The coronavirus second wave hit its peak in the Candover Valley and neighbouring areas during the first week of the new year, driven by the reduction in restrictions over the Christmas holiday period.

Alresford reached its peak on New Year's Eve with 42 cases on a rolling seven-day basis and a rate of 496.4 per 100,000. Springvale & Itchen Abbas had 35 and a rate of 509.

Four Marks & Tisted (52 and 423 per 100k) and Sutton Scotney & Micheldever (38 and 646.5 per 100k) followed on 4 Jan.

The peak for Old Basing & The Candovers was 8 Jan with 40 cases and a rate of 517.1 per 100k, and Hatch Warren followed on 11 Jan with 60 cases and a rate of 697.

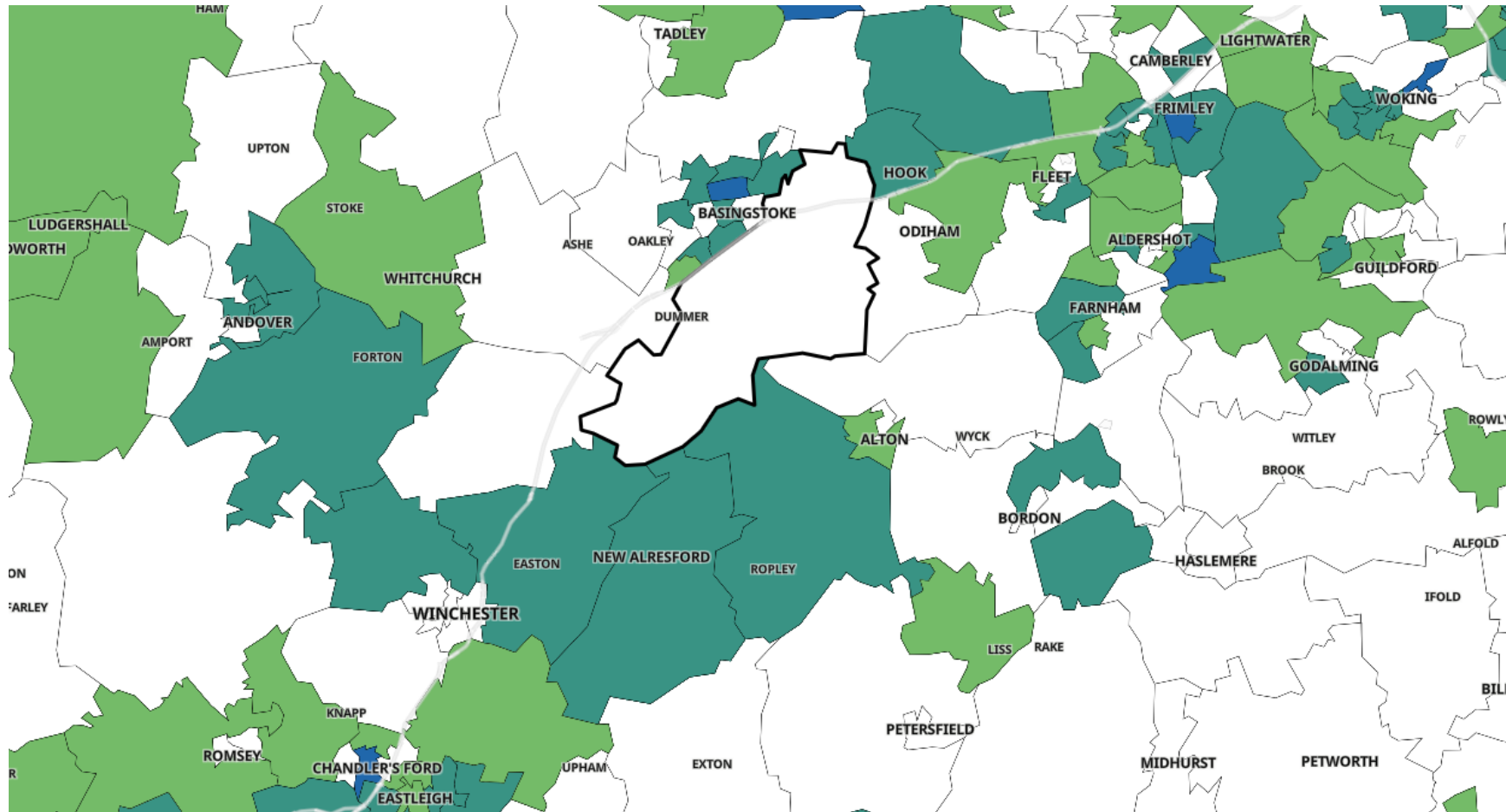
It has been declining steadily since. At 1 March, Old Basing & the Candovers, Sutton Scotney & Micheldever and Overton & North Waltham had less than three cases each. But Alresford had five and Four Marks & Tisted had seven cases. Springvale & Itchen Abbas, had 8 cases on 27 Feb, but declined to four on 1 March.



## Position in central Hampshire on 1 March

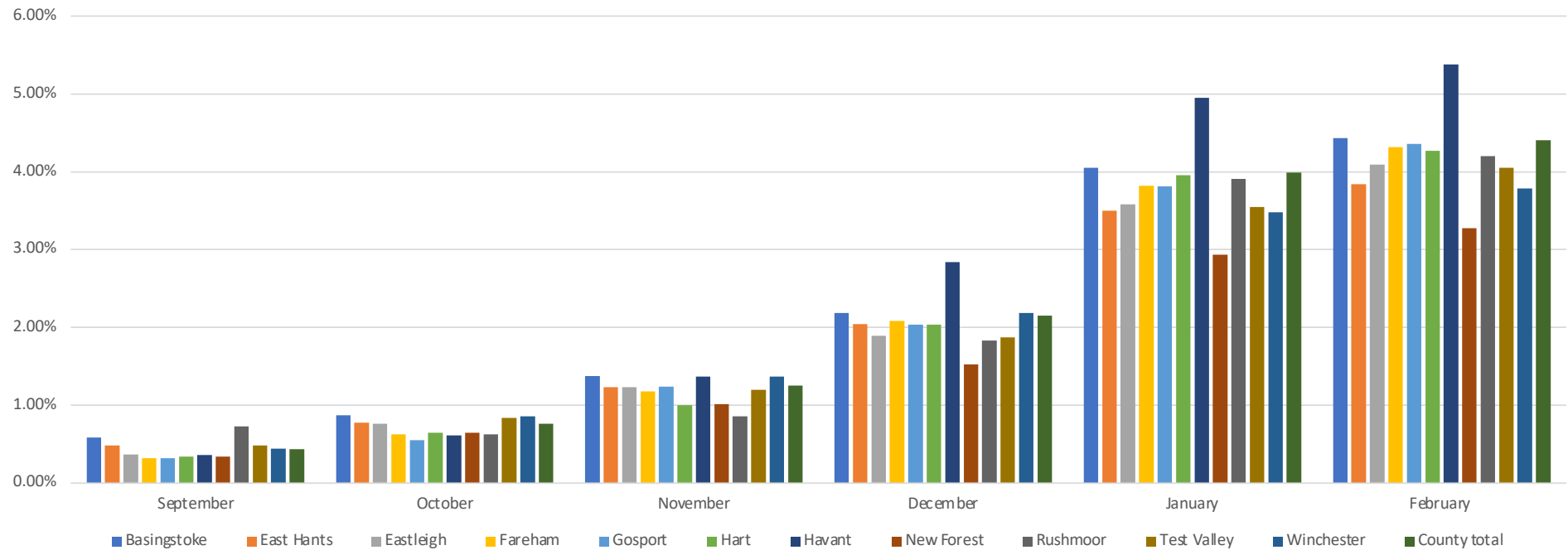
### Key to map colours

*Uncoloured* - Less than three cases, ie no data  
*Yellow* - 0 to 9 per 100k of population –  
*Light green* - 10 to 49  
*Dark green* - 50 to 99  
*Light blue* - 100 to 199  
*Dark blue* - 200 to 399  
*Dark red* – 400 - 799  
*Black* - 800 +



# *Proportion of population in each Hampshire district to have been diagnosed with covid-19*

Percentage of population diagnosed with covid-19 monthly



See detailed numbers on next sheet



## *Percentage of the local population in each Hampshire district diagnosed each month*

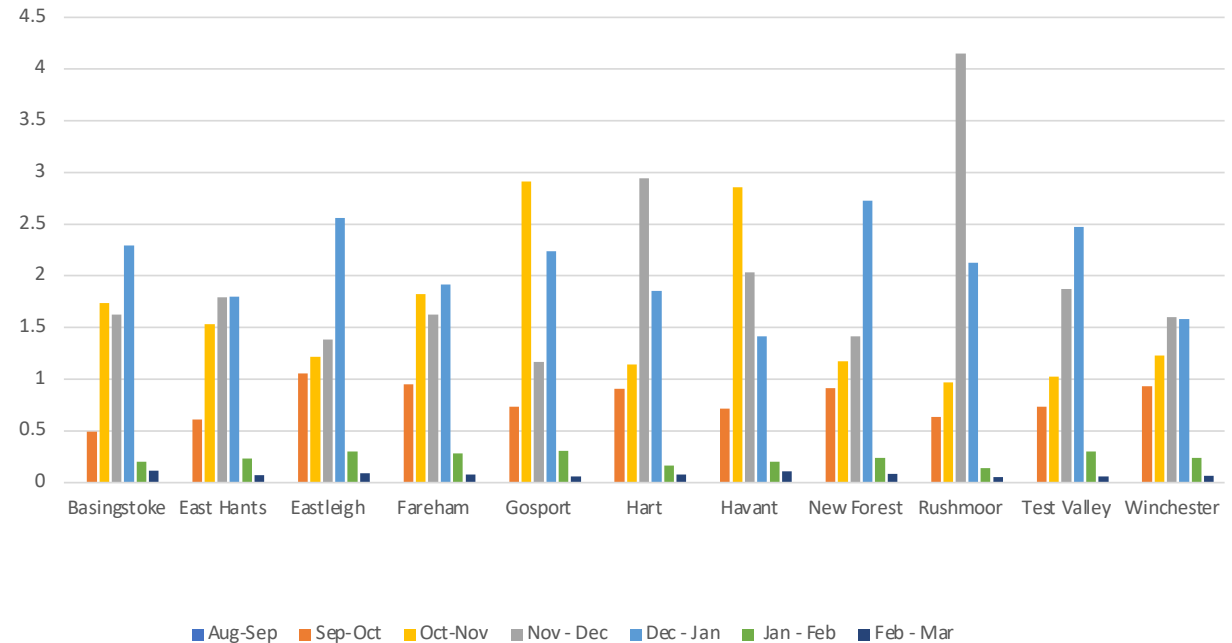
Coronavirus - percent of local population diagnosed at month end and current date															
	Pop.	September		October		November		December		January		February		March	
		No.	%	No.	%	No.	%	No.	%	No.	%	No.	%	No.	%
Basingstoke	176.56	1034	0.59%	1542	0.87%	2424	1.37%	3860	2.19%	7157	4.05%	7829	4.43%	7906	4.48%
East Hants	122.30	592	0.48%	953	0.78%	1506	1.23%	2496	2.04%	4277	3.50%	4695	3.84%	4726	3.86%
Eastleigh	133.56	493	0.37%	1015	0.76%	1650	1.24%	2530	1.89%	4781	3.58%	5465	4.09%	5526	4.14%
Fareham	116.24	373	0.32%	727	0.63%	1373	1.18%	2425	2.09%	4441	3.82%	5016	4.32%	5060	4.35%
Gosport	84.85	271	0.32%	471	0.56%	1050	1.24%	1725	2.03%	3236	3.81%	3698	4.36%	3726	4.39%
Hart	97.07	330	0.34%	630	0.65%	972	1.00%	1978	2.04%	3841	3.96%	4146	4.27%	4169	4.29%
Havant	126.22	453	0.36%	777	0.62%	1730	1.37%	3585	2.84%	6249	4.95%	6792	5.38%	6853	5.43%
New Forest	180.10	609	0.34%	1167	0.65%	1823	1.01%	2753	1.53%	5291	2.94%	5897	3.27%	5947	3.30%
Rushmoor	94.60	688	0.73%	1123	0.62%	1546	0.86%	3301	1.83%	7036	3.91%	7561	4.20%	7590	4.21%
Test Valley	126.16	607	0.48%	1053	0.83%	1509	1.20%	2364	1.87%	4477	3.55%	5109	4.05%	5145	4.08%
Winchester	124.84	556	0.45%	1074	0.86%	1711	1.37%	2730	2.19%	4343	3.48%	4729	3.79%	4754	3.81%
County total	1382.50	6006.00	0.43%	10532.00	0.76%	17294.00	1.25%	29747.00	2.15%	55129.00	3.99%	60937.00	4.41%	61402.00	4.44%

# Percentage increases month on month

This chart shows the rate of spread of the virus month on month in Hampshire districts. If the increasing percentage is above 100% it shows the infection rate is increasing; a lower percentage shows it is falling.

Currently it is now reducing in all districts and at 6 March all areas continued to show a very significant fall. After three months of rising at nearly 200% each month in several districts, the rate in all districts is below 12% in the latest month.

Percentage increases  
month on month 1 September to 6 March



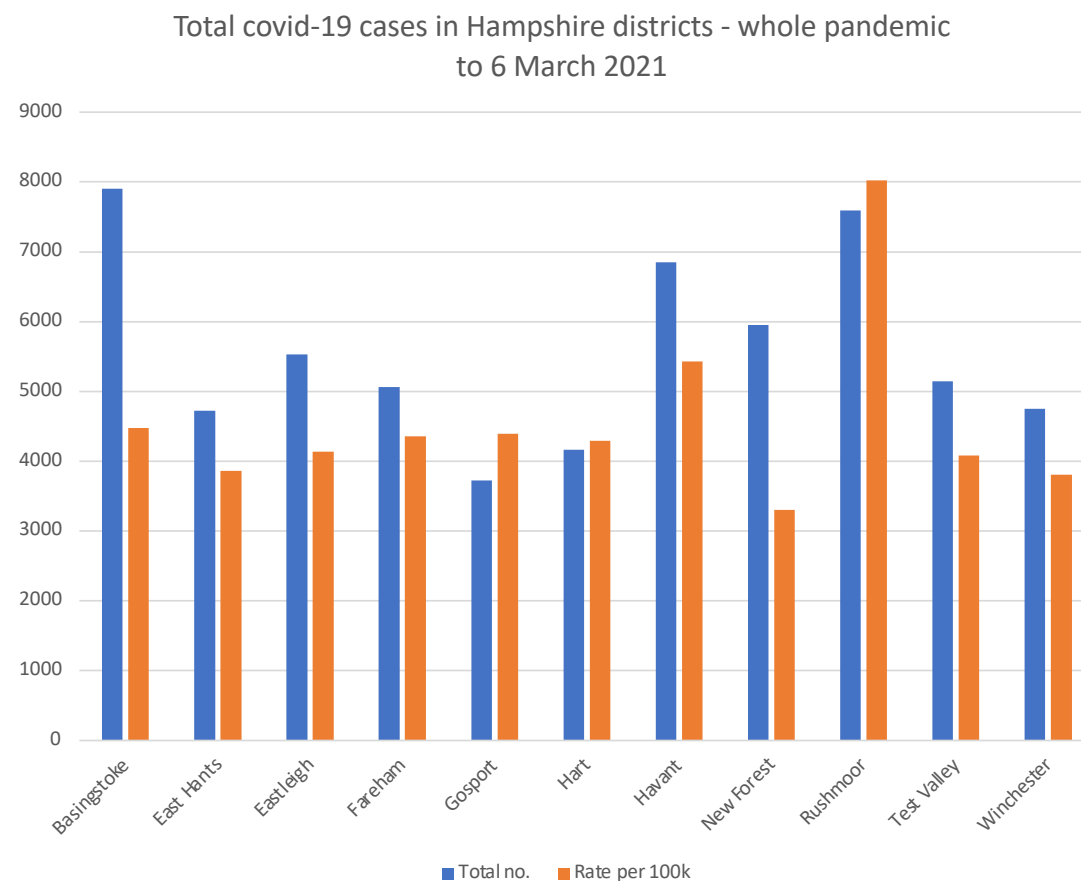
See the following table for details

## *Number of new cases monthly and percentage of local month on month*

Increases - month on month	Increase			Oct 31			Increase			Nov 30			Increase			Dec 31			Jan 31			Increase			Feb 28			Increase			Mar 6			Increase		
	Aug-31	Sep-30	Aug-Sep	Percent	Oct-31	Sep-Oct	Percent	Nov-30	Oct-Nov	Percent	December	Nov - Dec	Percent	January	Dec - Jan	Percent	February	Jan - Feb	Percent	March	Feb - Mar	Percent														
Basingstoke	970	1034	64	6.6%	1542	508	49.1%	2424	882	173.62%	3860	1436	162.81%	7157	3297	229.60%	7829	672	20.38%	7906	77	11.46%														
East Hants	535	592	57	10.7%	953	361	61.0%	1506	553	153.19%	2496	990	179.02%	4277	1781	179.90%	4695	418	23.47%	4726	31	7.42%														
Eastleigh	460	493	33	7.2%	1015	522	105.9%	1650	635	121.65%	2530	880	138.58%	4781	2251	255.80%	5465	684	30.39%	5526	61	8.92%														
Fareham	320	373	53	16.6%	727	354	94.9%	1373	646	182.49%	2425	1052	162.85%	4441	2016	191.63%	5016	575	28.52%	5060	44	7.65%														
Gosport	242	272	30	12.4%	471	199	73.2%	1050	579	290.95%	1725	675	116.58%	3236	1511	223.85%	3698	462	30.58%	3726	28	6.06%														
Hart	289	330	41	14.2%	630	300	90.9%	972	342	114.00%	1978	1006	294.15%	3841	1863	185.19%	4146	305	16.37%	4169	23	7.54%														
Havant	388	453	65	16.8%	777	324	71.5%	1703	926	285.80%	3585	1882	203.24%	6249	2664	141.55%	6792	543	20.38%	6853	61	11.23%														
New Forest	497	609	112	22.5%	1167	558	91.6%	1823	656	117.56%	2753	930	141.77%	5291	2538	272.90%	5897	606	23.88%	5947	50	8.25%														
Rushmoor	624	688	64	10.3%	1123	435	63.2%	1546	423	97.24%	3301	1755	414.89%	7036	3735	212.82%	7561	525	14.06%	7590	29	5.52%														
Test Valley	519	607	88	17.0%	1053	446	73.5%	1509	456	102.24%	2364	855	187.50%	4477	2113	247.13%	5109	632	29.91%	5145	36	5.70%														
Winchester	514	556	42	8.2%	1074	518	93.2%	1711	637	122.97%	2730	1019	159.97%	4343	1613	158.29%	4729	386	23.93%	4754	25	6.48%														
County total	5358	6007	649	12.1%	10532	4525	75.3%	17267	6735	63.95%	29747	12480	185.30%	55129	25382	203.38%	60937	5808	22.88%	61402	465	8.01%														

# Total cases in each Hampshire district & rate per 100k of population

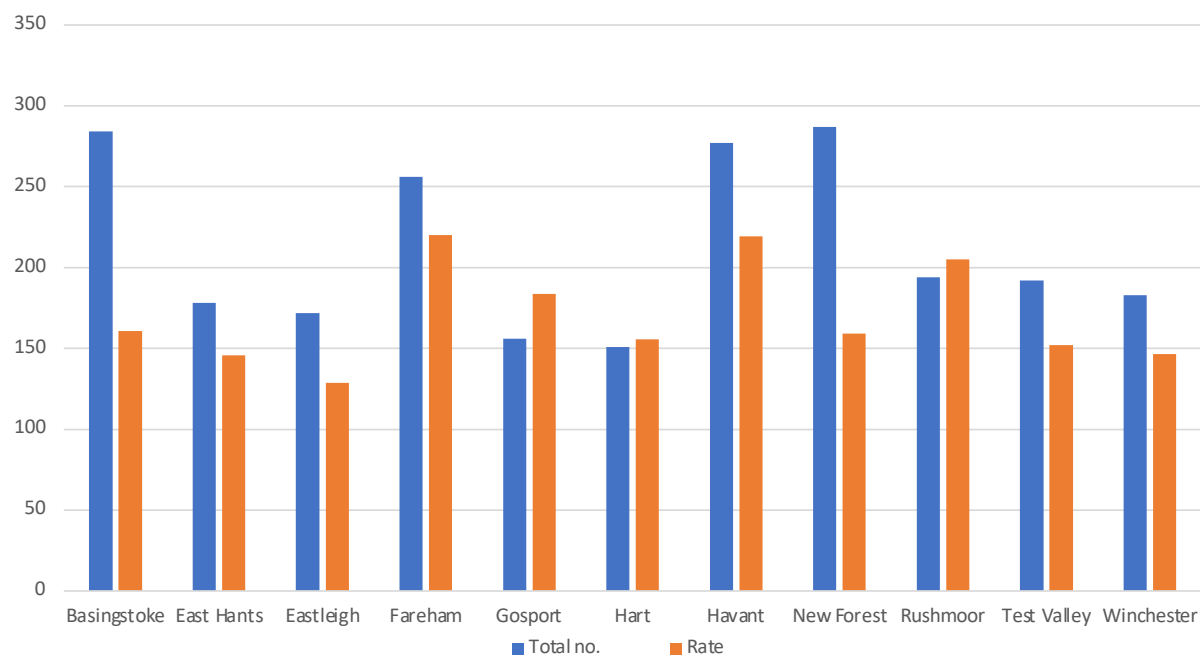
Total no. of cases up to:		"Mar 6		
whole pandemic		Total no.	Rate per 100k	Pop.
Basingstoke		7906	4477.80	176.56
East Hants		4726	3864.27	122.30
Eastleigh		5526	4137.47	133.56
Fareham		5060	4353.06	116.24
Gosport		3726	4391.28	84.85
Hart		4169	4294.84	97.07
Havant		6853	5429.41	126.22
New Forest		5947	3302.05	180.10
Rushmoor		7590	8023.26	94.60
Test Valley		5145	4078.15	126.16
Winchester		4754	3808.07	124.84
County total		61402	4441.37	1382.50



## Deaths in Hampshire districts

Deaths	Mar 6		
	Total no.		Rate
Basingstoke	284		160.85
East Hants	178		145.54
Eastleigh	172		128.78
Fareham	256		220.23
Gosport	156		183.85
Hart	151		155.56
Havant	277		219.46
New Forest	287		159.36
Rushmoor	194		205.07
Test Valley	192		152.19
Winchester	183		146.59
County total	2330		168.54

Covid-19 deaths in Hampshire districts  
to 6 March 2021



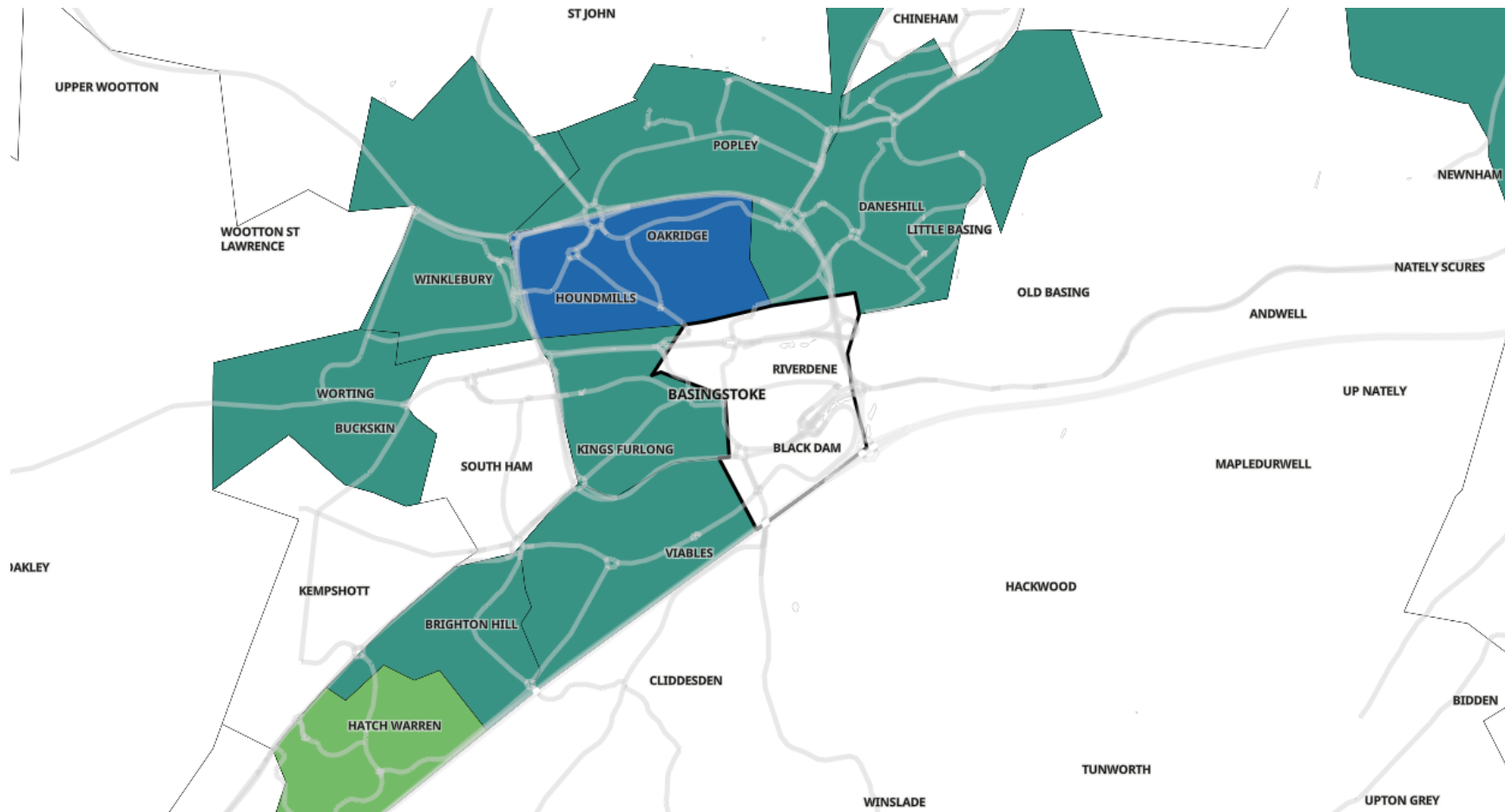
Total number of deaths during whole pandemic  
and rate per 100,000 of local population

# Position in Basingstoke town area on 1 March

Much of Basingstoke town has between 50 and 99 cases per 100,000 population on a rolling seven-day basis, but Houndmills & Oakridge had 10 cases and a rate of 134.1, while Black Dam & Eastrop, South & West Ham, and Kempshott had less than three cases.

## Key to map colours

Uncoloured - Less than three cases, ie no data  
Yellow - 0 to 9 per 100k of population –  
Light green - 10 to 49  
Dark green - 50 to 99  
Light blue - 100 to 199  
Dark blue - 200 to 399  
Dark red – 400 - 799  
Black - 800 +



*Data used in this document is derived from information provided by the Office for National Statistics and other official bodies as indicated below*

### **Attributions**

Contains MSOA names © Open Parliament copyright and database right 2020

Contains Ordnance Survey data © Crown copyright and database right 2020

Contains Royal Mail data © Royal Mail copyright and database right 2020

Contains Public Health England data © Crown copyright and database right 2020

Office for National Statistics licensed under the Open Government Licence v.3.0

*All data used in the map are available in the public domain and may be downloaded from the relevant website*