

# Coronavirus in Hampshire – *Update*

---

Weekly update  
February 28 2021

Data on district council areas in  
Hampshire

## Coronavirus across the south- east – 27 February 2021

### Key to map colours

Uncoloured -Less than three cases, ie no data

Yellow - 0 to 9 per 100k of population –

Light green - 10 to 49

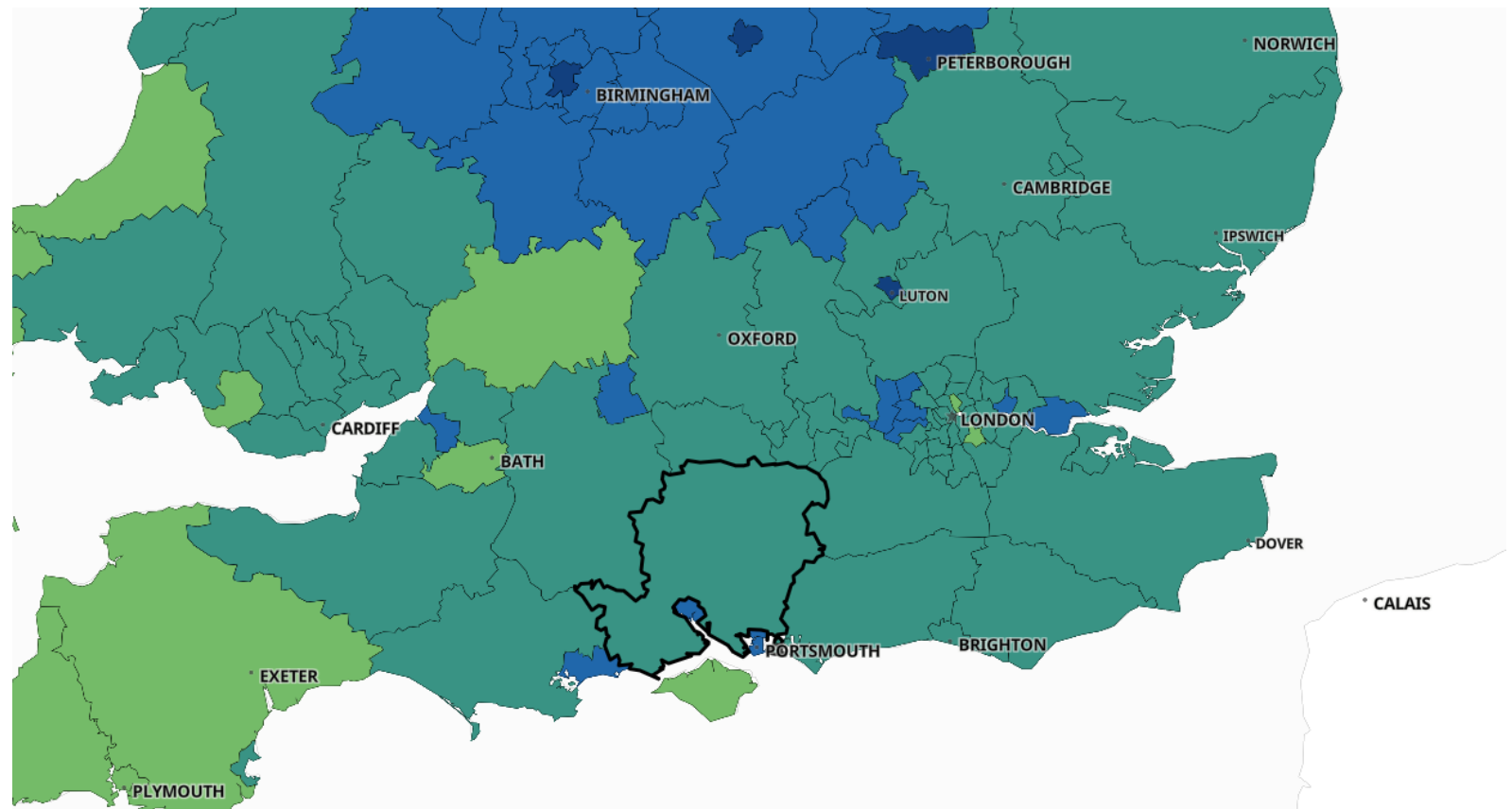
Dark green - 50 to 99

Light blue -100 to 199

Dark blue - 200 to 399

Dark red – 400 - 799

Black - 800 +



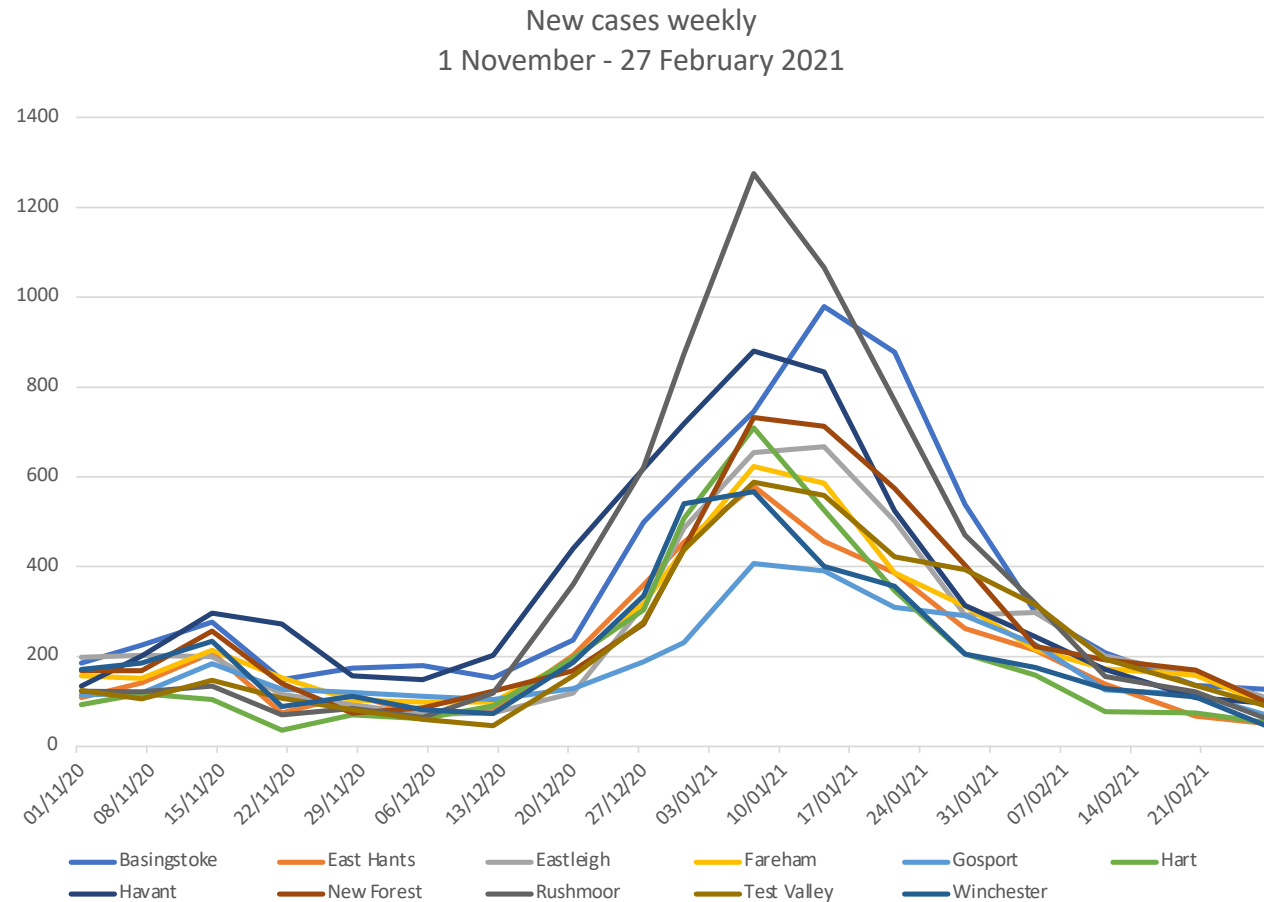
## *New cases reported each week since 1 November*

The coronavirus infection rate in Hampshire was on a slowly rising trend through September and October, although there was a blip in mid-November.

The rate of new infections started to rise quickly in mid-December to hit a peak in the first week of January following the lowering of restrictions during the run-up to Christmas and in the holiday period.

It has been declining steadily since to low levels in all Hampshire districts.

See next sheet for details.





## *New cases weekly 1 November – 27 February*

New cases weekly																		
	01/11/20	07/11/20	14/11/20	21/11/20	28/11/20	05/12/20	12/12/20	20/12/20	27/12/20	31/12/20	07/01/2021	14/01/2021	21/01/2021	28/01/21	04/02/21	11/02/21	20/02/21	27/02/21
Basingstoke	185	225	276	149	174	180	153	237	499	591	745	979	878	539	298	208	135	127
East Hants	108	141	208	74	114	71	80	203	359	454	579	456	386	263	214	139	67	51
Eastleigh	199	203	200	116	93	71	74	118	313	486	654	667	502	292	298	201	159	108
Fareham	157	151	214	153	103	99	98	194	318	438	623	586	387	312	215	173	159	95
Gosport	114	119	184	127	120	111	104	128	189	231	407	390	310	291	227	126	116	70
Hart	93	117	104	36	70	61	90	197	304	507	709	526	346	206	159	77	75	53
Havant	134	201	296	273	157	148	202	441	619	718	880	833	525	313	244	171	109	96
New Forest	168	168	257	140	74	86	123	168	272	440	732	713	574	404	222	193	170	98
Rushmoor	123	121	134	70	84	65	119	361	621	873	1275	1066	769	471	318	156	122	62
Test Valley	124	106	147	107	82	60	46	157	277	437	588	559	422	393	315	194	136	90
Winchester	172	186	234	88	111	81	73	187	335	540	567	401	356	205	175	128	110	46
County total	1577	1738	2254	1333	1182	1033	1162	2391	4106	5715	7759	7176	5455	3689	2685	1766	1358	896

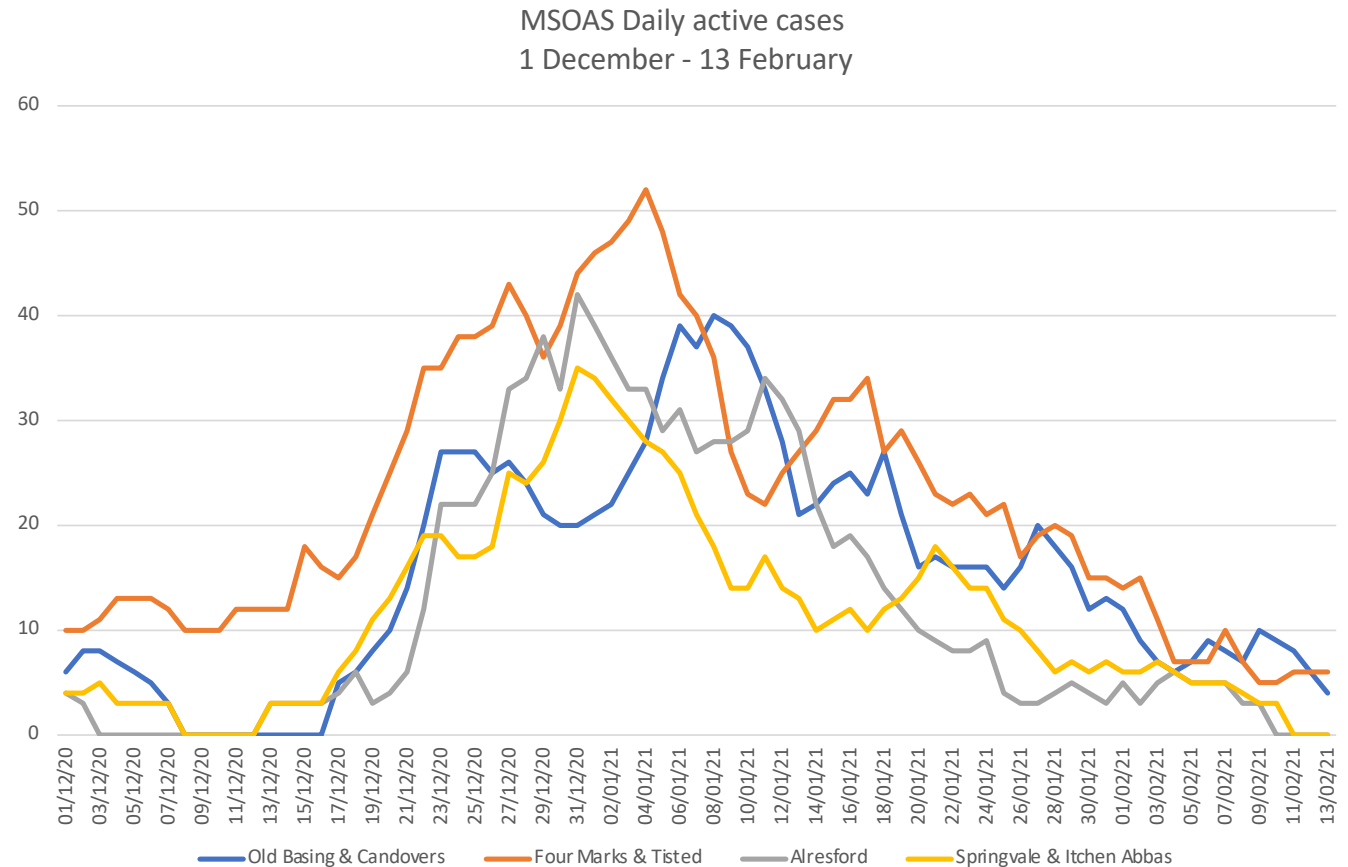
## Peak of second wave of coronavirus

The coronavirus second wave hit its peak in the Candover Valley and neighbouring areas during the first week of the new year, driven by the reduction in restrictions over the Christmas holiday period.

Alresford reached its peak on New Year's Eve with 42 cases on a rolling seven-day basis and a rate of 496.4 per 100,000. Springvale & Itchen Abbas had 35 and a rate of 509.

Four Marks & Tisted (52 and 423 per 100k) and Sutton Scotney & Micheldever (38 and 646.5 per 100k) followed on 4 Jan.

The peak for Old Basing & The Candovers was 8 Jan with 40 cases and a rate of 517.1 per 100k, and Hatch Warren followed on 11 Jan with 60 cases and a rate of 697.

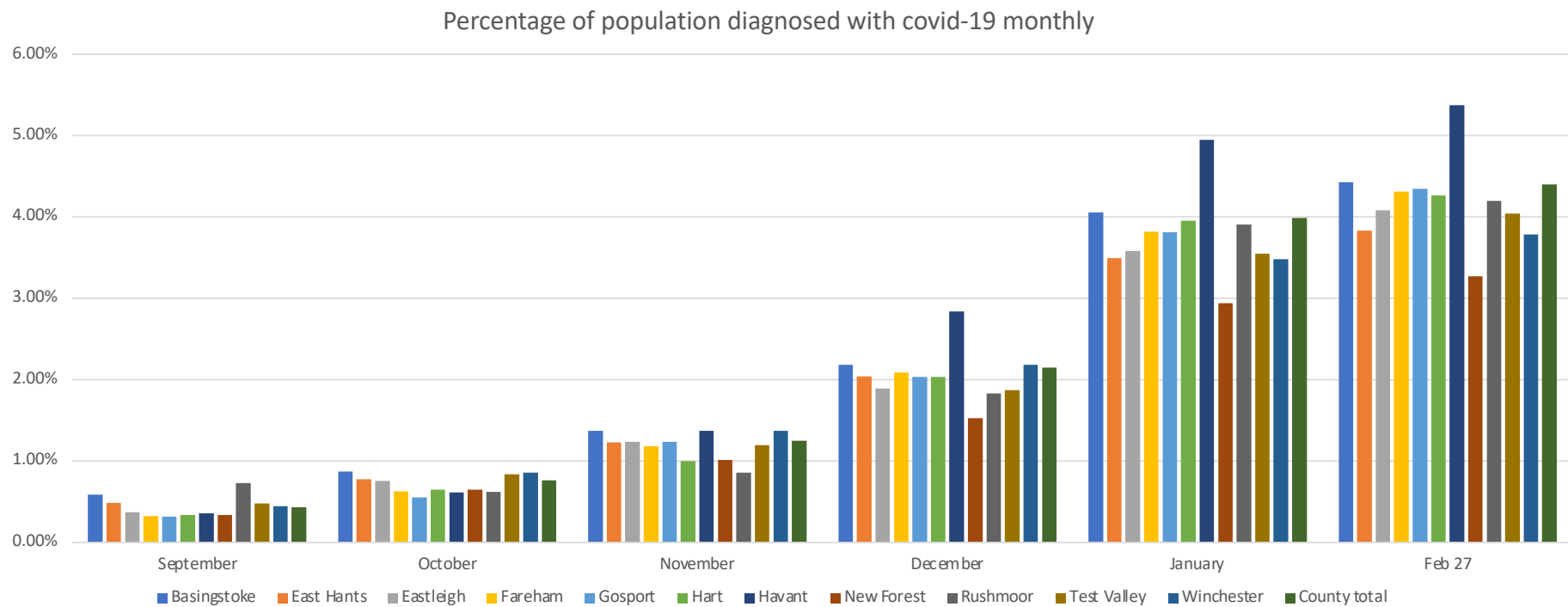


## *Percentage of the local population in each Hampshire district diagnosed each month*

Coronavirus - percent of local population diagnosed at month end and current date													
	Pop.	September		October		November		December		January		Feb 27	
		No.	%	No.	%	No.	%	No.	%	No.	%	No.	%
Basingstoke	176.56	1034	0.59%	1542	0.87%	2424	1.37%	3860	2.19%	7157	4.05%	7823	4.43%
East Hants	122.30	592	0.48%	953	0.78%	1506	1.23%	2496	2.04%	4277	3.50%	4691	3.84%
Eastleigh	133.56	493	0.37%	1015	0.76%	1650	1.24%	2530	1.89%	4781	3.58%	5453	4.08%
Fareham	116.24	373	0.32%	727	0.63%	1373	1.18%	2425	2.09%	4441	3.82%	5010	4.31%
Gosport	84.85	271	0.32%	471	0.56%	1050	1.24%	1725	2.03%	3236	3.81%	3689	4.35%
Hart	97.07	330	0.34%	630	0.65%	972	1.00%	1978	2.04%	3841	3.96%	4143	4.27%
Havant	126.22	453	0.36%	777	0.62%	1730	1.37%	3585	2.84%	6249	4.95%	6786	5.38%
New Forest	180.10	609	0.34%	1167	0.65%	1823	1.01%	2753	1.53%	5291	2.94%	5888	3.27%
Rushmoor	94.60	688	0.73%	1123	0.62%	1546	0.86%	3301	1.83%	7036	3.91%	7557	4.20%
Test Valley	126.16	607	0.48%	1053	0.83%	1509	1.20%	2364	1.87%	4477	3.55%	5100	4.04%
Winchester	124.84	556	0.45%	1074	0.86%	1711	1.37%	2730	2.19%	4343	3.48%	4726	3.79%
County total	1382.50	6006.00	0.43%	10532.00	0.76%	17294.00	1.25%	29747.00	2.15%	55129.00	3.99%	60866.00	4.40%

See the chart on next sheet

# *Proportion of population in each Hampshire district to have been diagnosed with covid-19*

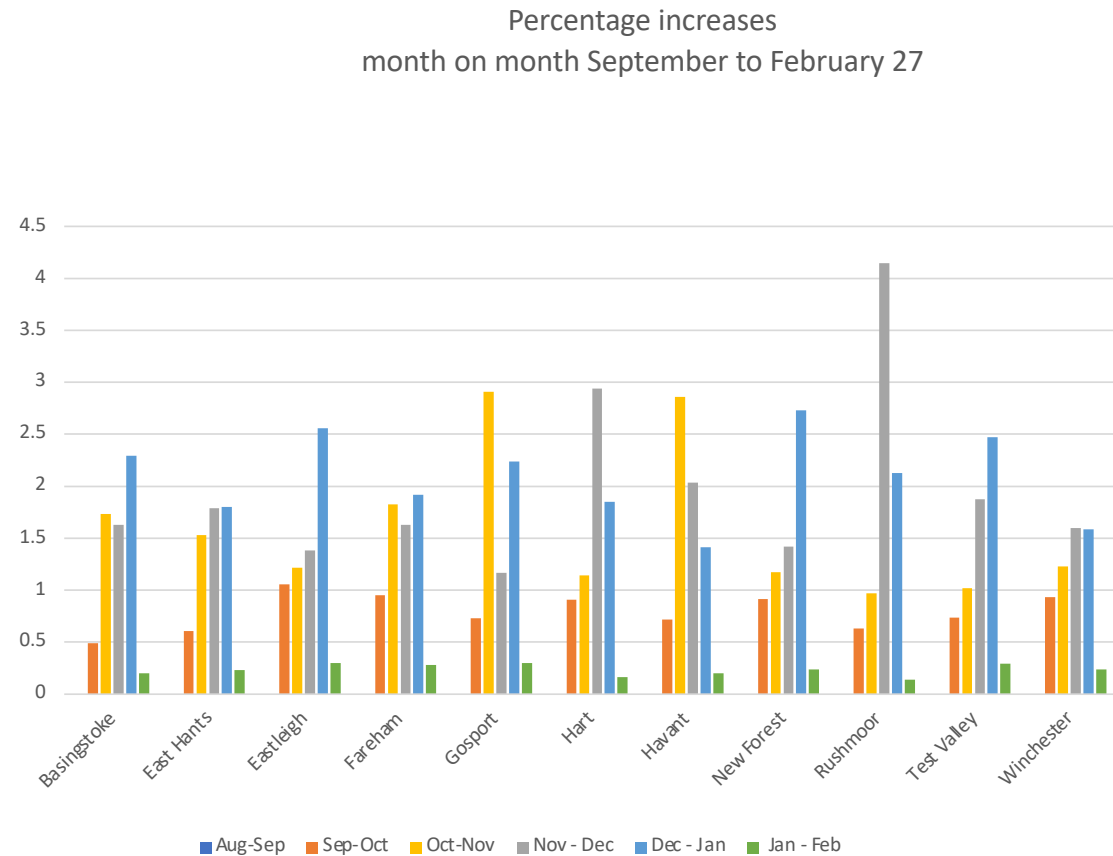


## Percentage increases month on month

This chart shows the rate of spread of the virus month on month in Hampshire districts. If the increasing percentage is above 100% it shows the infection rate is increasing; a lower percentage shows it is falling.

Currently it is now reducing in all districts and at 27 February, all districts showed a very significant fall. After three months of rising at nearly 200% each month in several districts, the rate in all districts is below 30% in the latest month.

See the following table for details





*Percentage increases month on month*

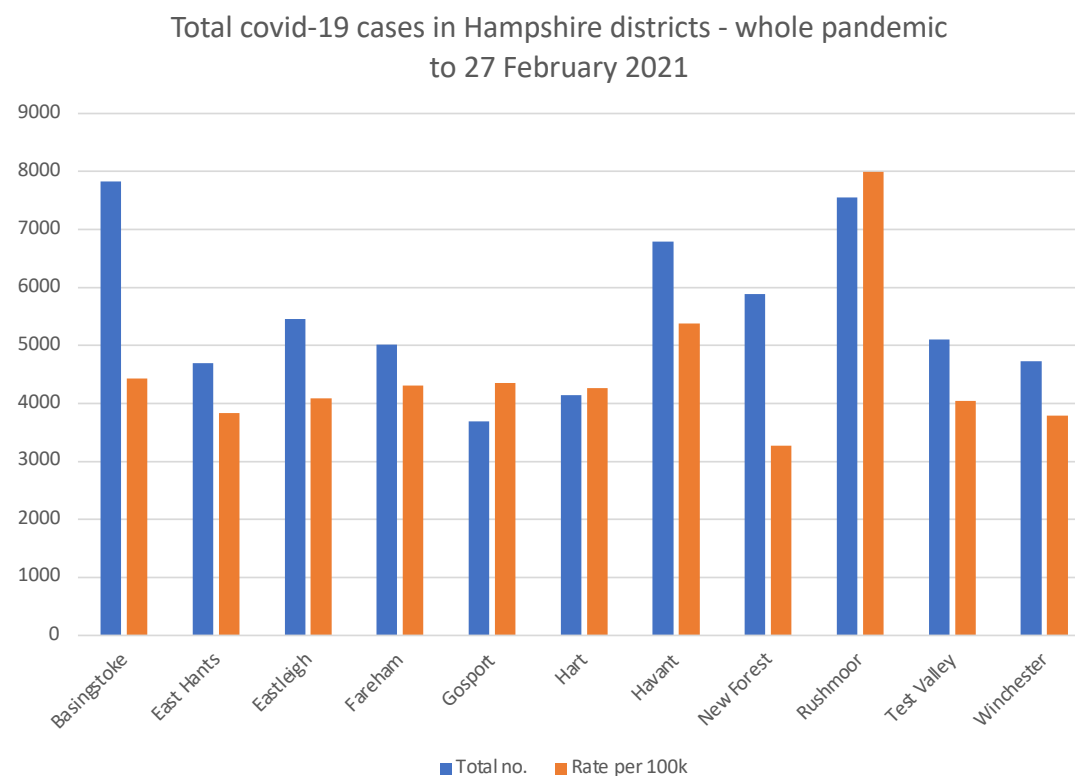
[illegible]

## *Number of new cases monthly and percentage of local population*

Coronavirus - percent of local population diagnosed at month end and current date													
	Pop.	September		October		November		December		January		Feb 27	
		No.	%	No.	%	No.	%	No.	%	No.	%	No.	%
Basingstoke	176.56	1034	0.59%	1542	0.87%	2424	1.37%	3860	2.19%	7157	4.05%	7823	4.43%
East Hants	122.30	592	0.48%	953	0.78%	1506	1.23%	2496	2.04%	4277	3.50%	4691	3.84%
Eastleigh	133.56	493	0.37%	1015	0.76%	1650	1.24%	2530	1.89%	4781	3.58%	5453	4.08%
Fareham	116.24	373	0.32%	727	0.63%	1373	1.18%	2425	2.09%	4441	3.82%	5010	4.31%
Gosport	84.85	271	0.32%	471	0.56%	1050	1.24%	1725	2.03%	3236	3.81%	3689	4.35%
Hart	97.07	330	0.34%	630	0.65%	972	1.00%	1978	2.04%	3841	3.96%	4143	4.27%
Havant	126.22	453	0.36%	777	0.62%	1730	1.37%	3585	2.84%	6249	4.95%	6786	5.38%
New Forest	180.10	609	0.34%	1167	0.65%	1823	1.01%	2753	1.53%	5291	2.94%	5888	3.27%
Rushmoor	94.60	688	0.73%	1123	0.62%	1546	0.86%	3301	1.83%	7036	3.91%	7557	4.20%
Test Valley	126.16	607	0.48%	1053	0.83%	1509	1.20%	2364	1.87%	4477	3.55%	5100	4.04%
Winchester	124.84	556	0.45%	1074	0.86%	1711	1.37%	2730	2.19%	4343	3.48%	4726	3.79%
County total	1382.50	6006.00	0.43%	10532.00	0.76%	17294.00	1.25%	29747.00	2.15%	55129.00	3.99%	60866.00	4.40%

## Total cases in each Hampshire district & rate per 100k of population

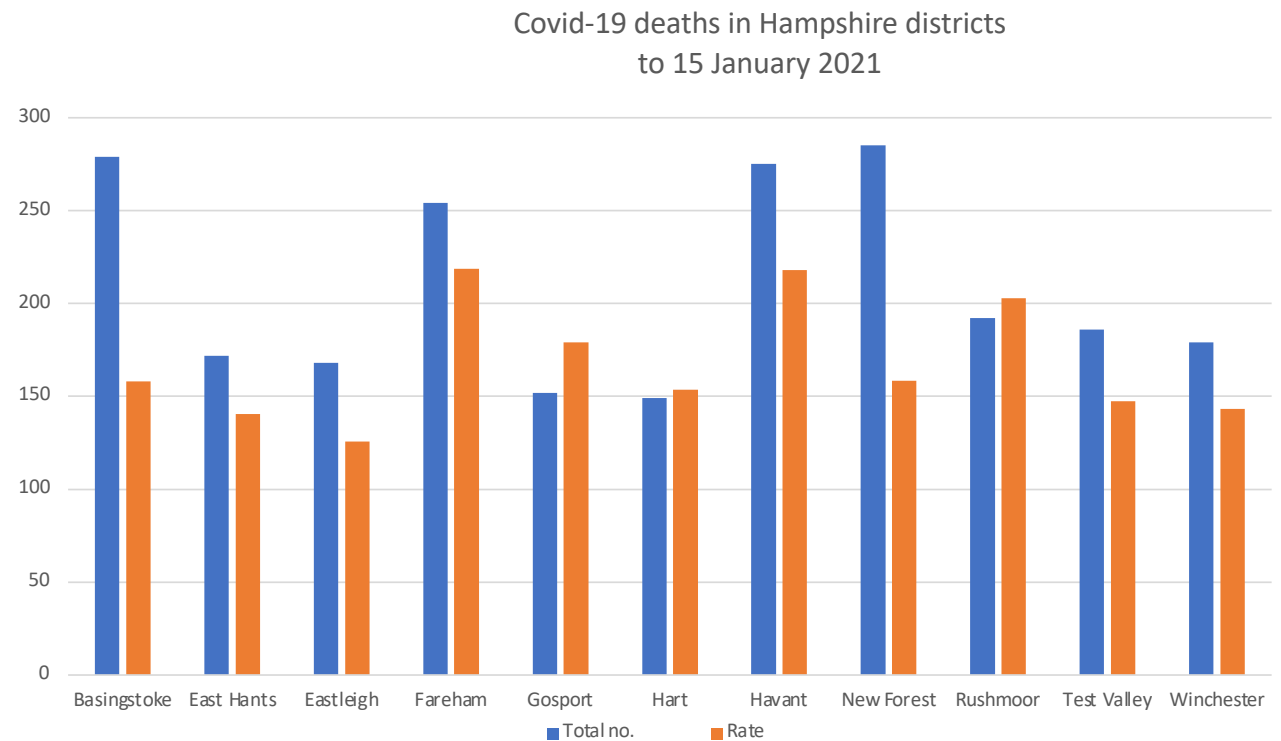
Total no. of cases up to:		Feb 27	
whole pandemic			
		Total no.	Rate per 100k
			Pop.
Basingstoke		7823	4430.79
East Hants		4691	3835.65
Eastleigh		5453	4082.81
Fareham		5010	4310.05
Gosport		3689	4347.67
Hart		4143	4268.05
Havant		6786	5376.33
New Forest		5888	3269.29
Rushmoor		7557	7988.37
Test Valley		5100	4042.49
Winchester		4726	3785.65
County total		60866	4402.60



## Deaths in Hampshire districts

Deaths	Feb 27		
	Total no.		Rate
Basingstoke	279		158.02
East Hants	172		140.64
Eastleigh	168		125.79
Fareham	254		218.51
Gosport	152		179.14
Hart	149		153.50
Havant	275		217.87
New Forest	285		158.25
Rushmoor	192		202.96
Test Valley	186		147.43
Winchester	179		143.38
County total	2291		165.71

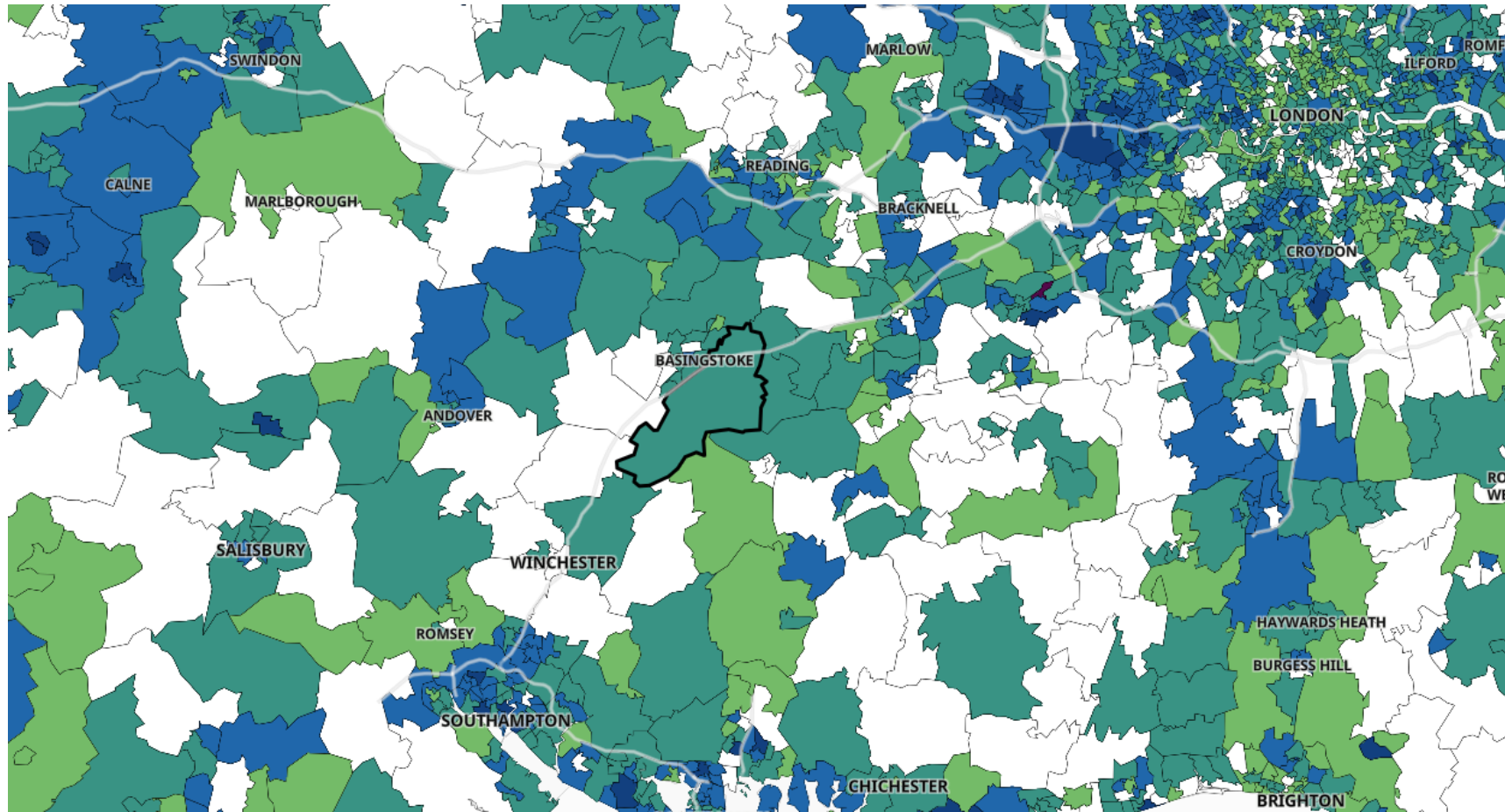
Total number of deaths during whole pandemic  
and rate per 100,000 of local population



## *Position in central Hampshire on 22 February*

### **Key to map colours**

*Uncoloured - Less than three cases, ie no data*  
*Yellow - 0 to 9 per 100k of population –*  
*Light green - 10 to 49*  
*Dark green - 50 to 99*  
*Light blue - 100 to 199*  
*Dark blue - 200 to 399*  
*Dark red – 400 - 799*  
*Black - 800 +*



*Data used in this document is derived from information provided by the Office for National Statistics and other official bodies as indicated below*

### **Attributions**

Contains MSOA names © Open Parliament copyright and database right 2020

Contains Ordnance Survey data © Crown copyright and database right 2020

Contains Royal Mail data © Royal Mail copyright and database right 2020

Contains Public Health England data © Crown copyright and database right 2020

Office for National Statistics licensed under the Open Government Licence v.3.0

*All data used in the map are available in the public domain and may be downloaded from the relevant website*